

Datasheet for ABIN2784547  
**anti-TRIP6 antibody (N-Term)**[Go to Product page](#)**1** Image**1** Publication

## Overview

Quantity:	100 µL
Target:	TRIP6
Binding Specificity:	N-Term
Reactivity:	Human, Mouse, Rat, Cow, Dog, Horse, Guinea Pig, Pig
Host:	Rabbit
Clonality:	Polyclonal
Conjugate:	This TRIP6 antibody is un-conjugated
Application:	Western Blotting (WB)

## Product Details

Immunogen:	The immunogen is a synthetic peptide directed towards the N terminal region of human TRIP6
Sequence:	MSGPTWLPPK QPEPARAPQG RAIPRGTPGP PPAHGAALQP HPRVNFCLP
Predicted Reactivity:	Cow: 100%, Dog: 86%, Guinea Pig: 93%, Horse: 100%, Human: 100%, Mouse: 86%, Pig: 100%, Rat: 100%
Characteristics:	This is a rabbit polyclonal antibody against TRIP6. It was validated on Western Blot using a cell lysate as a positive control.
Purification:	Affinity Purified

## Target Details

Target:	TRIP6
---------	-------

## Target Details

Alternative Name: TRIP6 ([TRIP6 Products](#))

Background: TRIP6 is a member of the zyxin family and encodes a protein with three LIM zinc-binding domains. This protein localizes to focal adhesion sites and along actin stress fibers. Recruitment of TRIP6 to the plasma membrane occurs in a lysophosphatidic acid (LPA)-dependent manner and it regulates LPA-induced cell migration. This gene is a member of the zyxin family and encodes a protein with three LIM zinc-binding domains. This protein localizes to focal adhesion sites and along actin stress fibers. Recruitment of this protein to the plasma membrane occurs in a lysophosphatidic acid (LPA)-dependent manner and it regulates LPA-induced cell migration. Alternatively spliced variants which encode different protein isoforms have been described, however, not all variants have been fully characterized. Publication Note: This RefSeq record includes a subset of the publications that are available for this gene. Please see the Entrez Gene record to access additional publications.

Alias Symbols: MGC10556, MGC10558, MGC29959, MGC3837, MGC4423, OIP1, ZRP-1, OIP-1, TRIP-6, TRIP6i2

Protein Interaction Partner: FASLG, SLC25A6, ABI2, CREB5, STK16, NCK2, TPM3, TMSB4X, RFX3, RAD23A, PRKAA2, PRKAA1, PIN1, PDGFRB, NEDD9, LMO2, KIR2DL4, HOXB9, HLA-DPB1, GNAI2, CNTF, BYSL, ATP50, RHOA, AQP1, KRTAP26-1, INCA1, CEP57L1, POM121L4P, RNF214, TTLL10, MSRB3, FAM154A, TEK4, L

Protein Size: 476

Molecular Weight: 50 kDa

Gene ID: 7205

NCBI Accession: [NM\\_003302](#), [NP\\_003293](#)

UniProt: [Q15654](#)

Pathways: [Cell-Cell Junction Organization](#)

## Application Details

Application Notes: Optimal working dilutions should be determined experimentally by the investigator.

Comment: Antigen size: 476 AA

Restrictions: For Research Use only

## Handling

Format: Liquid

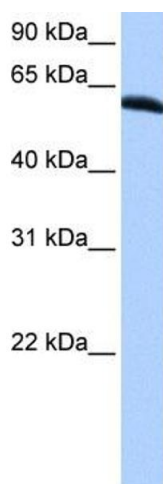
## Handling

Concentration:	Lot specific
Buffer:	Liquid. Purified antibody supplied in 1x PBS buffer with 0.09 % (w/v) sodium azide and 2 % sucrose.
Preservative:	Sodium azide
Precaution of Use:	This product contains Sodium azide: a POISONOUS AND HAZARDOUS SUBSTANCE which should be handled by trained staff only.
Handling Advice:	Avoid repeated freeze-thaw cycles.
Storage:	-20 °C
Storage Comment:	For short term use, store at 2-8°C up to 1 week. For long term storage, store at -20°C in small aliquots to prevent freeze-thaw cycles.

## Publications

Product cited in:	Collins, Wright, Edwards, Davis, Grinham, Cole, Goward, Aguado, Mallya, Mokrab, Huckle, Beare, Dunham: "A genome annotation-driven approach to cloning the human ORFeome." in: <b>Genome biology</b> , Vol. 5, Issue 10, pp. R84, (2004) ( <a href="#">PubMed</a> ).
-------------------	--

## Validation report #103398 for Immunocytochemistry (ICC)



### Western Blotting

**Image 1.** WB Suggested Anti-TRIP6 Antibody Titration: 0.2-1 ug/ml Positive Control: HepG2 cell lysate