

Datasheet for ABIN2784551
anti-CBX2 antibody (N-Term)[Go to Product page](#)

4 Images

Overview

Quantity:	100 µL
Target:	CBX2
Binding Specificity:	N-Term
Reactivity:	Human, Mouse, Rat, Cow, Horse, Dog, Guinea Pig, Rabbit
Host:	Rabbit
Clonality:	Polyclonal
Conjugate:	This CBX2 antibody is un-conjugated
Application:	Western Blotting (WB)

Product Details

Immunogen:	The immunogen is a synthetic peptide directed towards the N terminal region of human CBX2
Sequence:	SSSSSSSTSS SSSSDEEDDS DLDAGRGRG RETHVPVQKK AQILVAKPEL
Predicted Reactivity:	Cow: 100%, Dog: 100%, Guinea Pig: 100%, Horse: 93%, Human: 100%, Mouse: 100%, Rabbit: 100%, Rat: 100%
Characteristics:	This is a rabbit polyclonal antibody against CBX2. It was validated on Western Blot using a cell lysate as a positive control.
Purification:	Affinity Purified

Target Details

Target:	CBX2
---------	------

Target Details

Alternative Name:	CBX2 (CBX2 Products)
Background:	<p>CBX2 Contains 1 A.T hook DNA-binding domain and 1 chromo domain. CBX2 is a component of the Polycomb group (PcG) multiprotein PRC1 complex, a complex required to maintain the transcriptionally repressive state of many genes, including Hox genes, throughout development. PcG PRC1 complex acts via chromatin remodeling and modification of histones, it mediates monoubiquitination of histone H2A 'Lys-119', rendering chromatin heritably changed in its expressibility.</p> <p>Alias Symbols: CDCA6, M33, MGC10561, SRXY5</p> <p>Protein Interaction Partner: KRTAP10-3, KRTAP10-1, KRTAP10-9, KRTAP10-7, RBMY1F, DHX57, KRTAP2-4, RBMY1A1, RNF2, BMI1, MDFI, SOX2, GTF2I, PHC2, CSNK2B, CSNK2A2, CSNK2A1, CENPE, PARP1, CCDC158, DIS3L2, HIST4H4, CBX2, PARP12, RNF213, ZKSCAN7, DCAF6, KDM3A, MYCBP2, ANKRD26, PSME3, TRANK</p> <p>Protein Size: 532</p>
Molecular Weight:	56 kDa
Gene ID:	84733
NCBI Accession:	NM_005189 , NP_005180
UniProt:	Q14781

Application Details

Application Notes:	Optimal working dilutions should be determined experimentally by the investigator.
Comment:	Antigen size: 532 AA
Restrictions:	For Research Use only

Handling

Format:	Liquid
Concentration:	Lot specific
Buffer:	Liquid. Purified antibody supplied in 1x PBS buffer with 0.09 % (w/v) sodium azide and 2 % sucrose.
Preservative:	Sodium azide
Precaution of Use:	This product contains Sodium azide: a POISONOUS AND HAZARDOUS SUBSTANCE which should be handled by trained staff only.

Handling

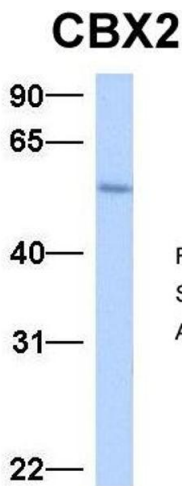
Handling Advice:	Avoid repeated freeze-thaw cycles.
Storage:	-20 °C
Storage Comment:	For short term use, store at 2-8°C up to 1 week. For long term storage, store at -20°C in small aliquots to prevent freeze-thaw cycles.

Images



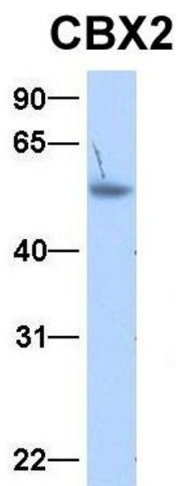
Western Blotting

Image 1. WB Suggested Anti-CBX2 Antibody Titration: 0.2-1 ug/ml Positive Control: Human heart



Western Blotting

Image 2. Host: Rabbit Target Name: CBX2 Sample Type: Human Fetal Liver Antibody Dilution: 1.0ug/ml



Western Blotting

Image 3. Host: Rabbit Target Name: CBX2 Sample Type:
Human Adult Placenta Antibody Dilution: 1.0ug/ml

Please check the [product details page](#) for more images. Overall 4 images are available for ABIN2784551.