



Datasheet for ABIN2784554  
**anti-MBNL2 antibody (Middle Region)**



[Go to Product page](#)

4 Images

Overview

Quantity:	100 µL
Target:	MBNL2
Binding Specificity:	Middle Region
Reactivity:	Human, Mouse, Rat, Cow, Dog, Guinea Pig, Rabbit, Zebrafish (Danio rerio), Horse
Host:	Rabbit
Clonality:	Polyclonal
Conjugate:	This MBNL2 antibody is un-conjugated
Application:	Western Blotting (WB)

Product Details

Immunogen:	The immunogen is a synthetic peptide directed towards the middle region of human MBNL2
Sequence:	ENGRVIACFD SLKGRCSREN CKYLHPPTHL KTQLEINGRN NLIQQKTA
Predicted Reactivity:	Cow: 100%, Dog: 100%, Guinea Pig: 100%, Horse: 93%, Human: 100%, Mouse: 100%, Rabbit: 100%, Rat: 100%, Zebrafish: 93%
Characteristics:	This is a rabbit polyclonal antibody against MBNL2. It was validated on Western Blot using a cell lysate as a positive control.
Purification:	Affinity Purified

Target Details

Target:	MBNL2
---------	-------

## Target Details

---

Alternative Name:	MBNL2 ( <a href="#">MBNL2 Products</a> )
Background:	<p>MBNL2 is a C3H-type zinc finger protein, which is similar to the Drosophila melanogaster muscleblind B protein. MBNL2 is a RNA-binding protein that binds to 5'ACACCC-3' core sequence. It binds to CUG triplet repeat expansion in myotonic dystrophy muscle cells by sequestering the target RNAs. MBNL2 seems to regulate expression and localization of ITGA3 by transporting it from the nucleus to cytoplasm. It may play a role in myotonic dystrophy pathophysiology (DM).</p> <p>Alias Symbols: DKFZp781H1296, MBLL, MBLL39, MGC120625, MGC120626, MGC120628, PRO2032, RP11-128N14.1</p> <p>Protein Interaction Partner: BMI1, ELAVL1, UBC,</p> <p>Protein Size: 255</p>
Molecular Weight:	28 kDa
Gene ID:	10150
NCBI Accession:	<a href="#">NM_005757</a> , <a href="#">NP_005748</a>
UniProt:	<a href="#">O95205</a>

## Application Details

---

Application Notes:	Optimal working dilutions should be determined experimentally by the investigator.
Comment:	Antigen size: 255 AA
Restrictions:	For Research Use only

## Handling

---

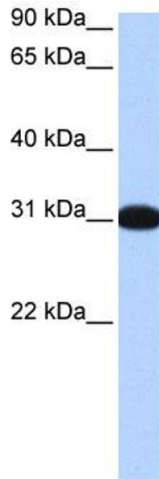
Format:	Liquid
Concentration:	Lot specific
Buffer:	Liquid. Purified antibody supplied in 1x PBS buffer with 0.09 % (w/v) sodium azide and 2 % sucrose.
Preservative:	Sodium azide
Precaution of Use:	This product contains Sodium azide: a POISONOUS AND HAZARDOUS SUBSTANCE which should be handled by trained staff only.
Handling Advice:	Avoid repeated freeze-thaw cycles.

## Handling

Storage: -20 °C

Storage Comment: For short term use, store at 2-8°C up to 1 week. For long term storage, store at -20°C in small aliquots to prevent freeze-thaw cycles.

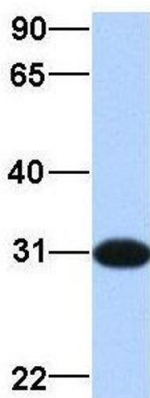
## Images



### Western Blotting

**Image 1.** WB Suggested Anti-MBNL2 Antibody Titration: 0.2-1 ug/ml Positive Control: Human brain

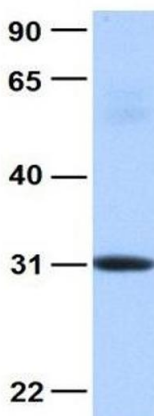
## MBNL2



### Western Blotting

**Image 2.** Host: Rabbit Target Name: MBNL2 Sample Type: Human Fetal Brain Antibody Dilution: 1.0ug/ml

## MBNL2



### Western Blotting

**Image 3.** Host: Rabbit Target Name: MBNL2 Sample Type: Human Fetal Heart Antibody Dilution: 1.0ug/ml

Please check the [product details page](#) for more images. Overall 4 images are available for ABIN2784554.