

Datasheet for ABIN2784568  
**anti-NUFIP2 antibody (N-Term)**



[Go to Product page](#)

1 Image

## Overview

Quantity:	100 µL
Target:	NUFIP2
Binding Specificity:	N-Term
Reactivity:	Mouse, Human, Rat, Rabbit, Cow, Dog, Guinea Pig, Horse, Zebrafish (Danio rerio)
Host:	Rabbit
Clonality:	Polyclonal
Conjugate:	This NUFIP2 antibody is un-conjugated
Application:	Western Blotting (WB)

## Product Details

Immunogen:	The immunogen is a synthetic peptide directed towards the N terminal region of human NUFIP2
Sequence:	IPNGVVTNNS GYITNGYMGK GADNDGSGSE SGYTTPKKRK ARRNSAKGCE
Predicted Reactivity:	Cow: 100%, Dog: 100%, Guinea Pig: 100%, Horse: 100%, Human: 100%, Mouse: 100%, Rabbit: 100%, Rat: 100%, Zebrafish: 100%
Characteristics:	This is a rabbit polyclonal antibody against NUFIP2. It was validated on Western Blot using a cell lysate as a positive control.
Purification:	Affinity Purified

## Target Details

Target:	NUFIP2
---------	--------

## Target Details

Alternative Name:	NUFIP2 ( <a href="#">NUFIP2 Products</a> )
Background:	<p>NUFIP2 binds RNA. It is phosphorylated upon DNA damage, probably by ATM or ATR. The exact functions of NUFIP2 remain unknown.</p> <p>Alias Symbols: 182-FIP, 82-FIP, FIP-82, FLJ10976, KIAA1321, MGC117262, PIG1</p> <p>Protein Interaction Partner: PCSK5, KRTAP5-9, KRTAP4-11, KRTAP5-6, KRTAP10-3, KRTAP10-8, KRTAP10-5, KRTAP10-9, KRTAP10-7, KRTAP3-3, KRTAP4-2, KRTAP9-4, KRTAP9-2, KRTAP3-2, KRTAP4-12, EFEMP2, LGALS13, RGS17, TRAF1, UBC, DDX6, BMI1, SH3RF2, TARDBP, FMNL1, SUMO2, SUMO3, COPS5, SIRT7, TS</p> <p>Protein Size: 695</p>
Molecular Weight:	76 kDa
Gene ID:	57532
NCBI Accession:	<a href="#">NM_020772</a> , <a href="#">NP_065823</a>
UniProt:	<a href="#">Q7Z417</a>

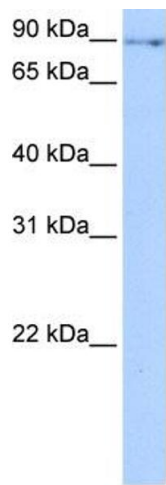
## Application Details

Application Notes:	Optimal working dilutions should be determined experimentally by the investigator.
Comment:	Antigen size: 695 AA
Restrictions:	For Research Use only

## Handling

Format:	Liquid
Concentration:	Lot specific
Buffer:	Liquid. Purified antibody supplied in 1x PBS buffer with 0.09 % (w/v) sodium azide and 2 % sucrose.
Preservative:	Sodium azide
Precaution of Use:	This product contains Sodium azide: a POISONOUS AND HAZARDOUS SUBSTANCE which should be handled by trained staff only.
Handling Advice:	Avoid repeated freeze-thaw cycles.
Storage:	-20 °C
Storage Comment:	For short term use, store at 2-8°C up to 1 week. For long term storage, store at -20°C in small

aliquots to prevent freeze-thaw cycles.



Western Blotting

**Image 1.** WB Suggested Anti-NUFIP2 Antibody Titration:  
0.2-1 ug/ml Positive Control: NTERA2 cell lysate