

Datasheet for ABIN2784573
anti-MICAL-Like 1 antibody (N-Term)[Go to Product page](#)

4 Images

Overview

Quantity:	100 µL
Target:	MICAL-Like 1 (MICALL1)
Binding Specificity:	N-Term
Reactivity:	Human, Goat
Host:	Rabbit
Clonality:	Polyclonal
Conjugate:	This MICAL-Like 1 antibody is un-conjugated
Application:	Western Blotting (WB), Immunohistochemistry (IHC)

Product Details

Immunogen:	The immunogen is a synthetic peptide directed towards the N terminal region of human MICALL1
Sequence:	ENGPEEGTFV CAEHCARLGP GTRSGTRPGP FSQPKQQHQQ QLAEDAKDVP
Predicted Reactivity:	Goat: 82%, Human: 100%
Characteristics:	This is a rabbit polyclonal antibody against MICALL1. It was validated on Western Blot using a cell lysate as a positive control.
Purification:	Affinity Purified

Target Details

Target:	MICAL-Like 1 (MICALL1)
---------	------------------------

Target Details

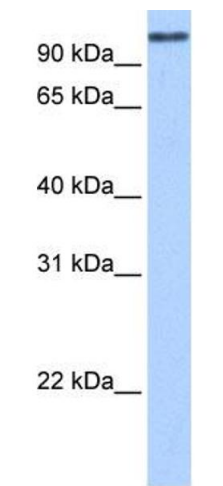
Alternative Name:	MICALL1 (MICALL1 Products)
Background:	<p>MICALL1 contains 1 CH (calponin-homology) domain and 1 LIM zinc-binding domain. It may be a cytoskeletal regulator.</p> <p>Alias Symbols: DKFZp686M2226, FLJ45921, KIAA1668, MICAL-L1, MIRAB13</p> <p>Protein Interaction Partner: EHD1, HECW2, UBC, ANKFY1, ZP3, SH3KBP1, YWHAG, YWHAB, PACSIN1, PACSIN3, PACSIN2, RAB1A,</p> <p>Protein Size: 863</p>
Molecular Weight:	93 kDa
Gene ID:	85377
NCBI Accession:	NM_033386 , NP_203744
UniProt:	Q8N3F8

Application Details

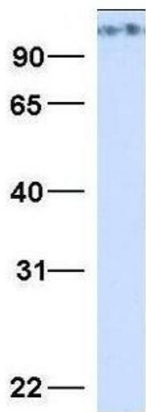
Application Notes:	Optimal working dilutions should be determined experimentally by the investigator.
Comment:	Antigen size: 863 AA
Restrictions:	For Research Use only

Handling

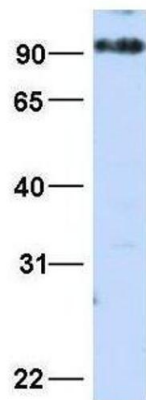
Format:	Liquid
Concentration:	Lot specific
Buffer:	Liquid. Purified antibody supplied in 1x PBS buffer with 0.09 % (w/v) sodium azide and 2 % sucrose.
Preservative:	Sodium azide
Precaution of Use:	This product contains Sodium azide: a POISONOUS AND HAZARDOUS SUBSTANCE which should be handled by trained staff only.
Handling Advice:	Avoid repeated freeze-thaw cycles.
Storage:	-20 °C
Storage Comment:	For short term use, store at 2-8°C up to 1 week. For long term storage, store at -20°C in small aliquots to prevent freeze-thaw cycles.



MICALL1



MICALL1



Western Blotting

Image 1. WB Suggested Anti-MICALL1 Antibody Titration:
0.2-1 ug/ml Positive Control: Human Liver

Western Blotting

Image 2. Host: Rabbit Target Name: MICALL1 Sample Type:
293T Antibody Dilution: 1.0ug/ml MICALL1 is supported by
BioGPS gene expression data to be expressed in HEK293T

Western Blotting

Image 3. Host: Rabbit Target Name: MICALL1 Sample Type:
HepG2 Antibody Dilution: 1.0ug/ml MICALL1 is supported
by BioGPS gene expression data to be expressed in HepG2

Please check the [product details page](#) for more images. Overall 4 images are available for ABIN2784573.