

Datasheet for ABIN2784607
anti-Septin 9 antibody (C-Term)[Go to Product page](#)

1 Image

1 Publication

Overview

Quantity:	100 µL
Target:	Septin 9 (SEPT9)
Binding Specificity:	C-Term
Reactivity:	Human, Mouse, Rat, Zebrafish (Danio rerio), Guinea Pig, Rabbit, Cow, Dog, Horse
Host:	Rabbit
Clonality:	Polyclonal
Conjugate:	This Septin 9 antibody is un-conjugated
Application:	Western Blotting (WB)

Product Details

Immunogen:	The immunogen is a synthetic peptide directed towards the C terminal region of human SEPT9(septin 9)
Sequence:	HCEFAYLRDL LIRTHMQNIK DITSSIHFEA YRVKRLNEGS SAMANGMEEK
Predicted Reactivity:	Cow: 93%, Dog: 93%, Guinea Pig: 100%, Horse: 86%, Human: 100%, Mouse: 100%, Rabbit: 83%, Rat: 100%, Zebrafish: 83%
Characteristics:	This is a rabbit polyclonal antibody against SEPT9(septin 9) . It was validated on Western Blot using a cell lysate as a positive control.
Purification:	Affinity Purified

Target Details

Target:	Septin 9 (SEPT9)
---------	------------------

Target Details

Alternative Name:	SEPT9(septin 9) (SEPT9 Products)
Background:	<p>Septin-9 is a member of the septin family, which contains cytoplasmic cytoskeletal filament-forming proteins that have a conserved GTP-binding domain. Septin-9 is a member of the septin family, which contains cytoplasmic cytoskeletal filament-forming proteins that have a conserved GTP-binding domain (Osaka et al., 1999 [PubMed 10339604]). [supplied by OMIM].</p> <p>Publication Note: This RefSeq record includes a subset of the publications that are available for this gene. Please see the Entrez Gene record to access additional publications.</p> <p>Alias Symbols: AF17q25, KIAA0991, MSF, MSF1, NAPB, PNUTL4, SINT1, SeptD1</p> <p>Protein Interaction Partner: SEPT6, HAUS1, SUMO2, UBC, EED, HNRNPD, FN1, CFTR, VAMP2, SVIL, SCP2, NDUFV2, NCL, MSH2, HSPD1, FLNB, COPA, SEPT7, APP, UQCRFS1P1, UQCRFS1, TPM3, SUCLG2, VMA21, SEPT11, TMED9, HN1, TOR1AIP1, FERMT2, TIMM44, HRSP12, SCO2, SEC22B, VAPB, SUCLG1, UBXN6, UBD, S</p> <p>Protein Size: 335</p>
Molecular Weight:	37 kDa
Gene ID:	10801
NCBI Accession:	NM_001113496 , NP_001106968
UniProt:	Q9UHD8

Application Details

Application Notes:	Optimal working dilutions should be determined experimentally by the investigator.
Comment:	Antigen size: 335 AA
Restrictions:	For Research Use only

Handling

Format:	Liquid
Concentration:	Lot specific
Buffer:	Liquid. Purified antibody supplied in 1x PBS buffer with 0.09 % (w/v) sodium azide and 2 % sucrose.
Preservative:	Sodium azide
Precaution of Use:	This product contains Sodium azide: a POISONOUS AND HAZARDOUS SUBSTANCE which should be handled by trained staff only.

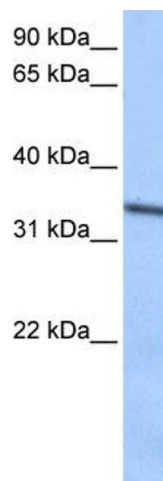
Handling

Handling Advice:	Avoid repeated freeze-thaw cycles.
Storage:	-20 °C
Storage Comment:	For short term use, store at 2-8°C up to 1 week. For long term storage, store at -20°C in small aliquots to prevent freeze-thaw cycles.

Publications

Product cited in:	Gerhard, Wagner, Feingold, Shenmen, Grouse, Schuler, Klein, Old, Rasooly, Good, Guyer, Peck, Derge, Lipman, Collins, Jang, Sherry, Feolo, Misquitta, Lee, Rotmistrovsky, Greenhut, Schaefer, Buetow et al.: "The status, quality, and expansion of the NIH full-length cDNA project: the Mammalian Gene Collection (MGC). ..." in: Genome research , Vol. 14, Issue 10B, pp. 2121-7, (2004) (PubMed).
-------------------	--

Images



Western Blotting

Image 1. WB Suggested Anti-SEPT9(septin 9) Antibody

Titration: 0.2-1 ug/ml

Positive Control: HepG2 cell lysate