



[Go to Product page](#)

Datasheet for ABIN2784612

anti-CYP1B1 antibody (Middle Region)

2 Images

2 Publications

Overview

Quantity:	100 µL
Target:	CYP1B1
Binding Specificity:	Middle Region
Reactivity:	Human, Mouse, Rat, Dog, Rabbit, Cow, Guinea Pig, Horse
Host:	Rabbit
Clonality:	Polyclonal
Conjugate:	This CYP1B1 antibody is un-conjugated
Application:	Western Blotting (WB)

Product Details

Immunogen:	The immunogen is a synthetic peptide directed towards the middle region of human CYP1B1
Sequence:	AVANVMSAVC FGCRYSHDDP EFRELLSHNE EFGRTVGAGS LVDVMPWLQY
Predicted Reactivity:	Cow: 100%, Dog: 100%, Guinea Pig: 100%, Horse: 93%, Human: 100%, Mouse: 100%, Rabbit: 100%, Rat: 100%
Characteristics:	This is a rabbit polyclonal antibody against CYP1B1. It was validated on Western Blot.
Purification:	Affinity Purified

Target Details

Target:	CYP1B1
Alternative Name:	CYP1B1 (CYP1B1 Products)

Target Details

Background: CYP1B1 is a member of the cytochrome P450 superfamily of enzymes. The cytochrome P450 proteins are monooxygenases which catalyze many reactions involved in drug metabolism and synthesis of cholesterol, steroids and other lipids. CYP1B1 localizes to the endoplasmic reticulum and metabolizes procarcinogens such as polycyclic aromatic hydrocarbons and 17beta-estradiol. Mutations in this gene have been associated with primary congenital glaucoma, therefore it is thought that the enzyme also metabolizes a signaling molecule involved in eye development, possibly a steroid. This gene encodes a member of the cytochrome P450 superfamily of enzymes. The cytochrome P450 proteins are monooxygenases which catalyze many reactions involved in drug metabolism and synthesis of cholesterol, steroids and other lipids. The enzyme encoded by this gene localizes to the endoplasmic reticulum and metabolizes procarcinogens such as polycyclic aromatic hydrocarbons and 17beta-estradiol. Mutations in this gene have been associated with primary congenital glaucoma, therefore it is thought that the enzyme also metabolizes a signaling molecule involved in eye development, possibly a steroid. Publication Note: This RefSeq record includes a subset of the publications that are available for this gene. Please see the Entrez Gene record to access additional publications.

Alias Symbols: CP1B, GLC3A, P4501B1, CYP1B1

Protein Interaction Partner: UBC, SAE1,

Protein Size: 543

Molecular Weight: 61 kDa

Gene ID: 1545

NCBI Accession: [NM_000104](#), [NP_000095](#)

UniProt: [Q16678](#)

Pathways: [Steroid Hormone Biosynthesis](#)

Application Details

Application Notes: Optimal working dilutions should be determined experimentally by the investigator.

Comment: Antigen size: 543 AA

Restrictions: For Research Use only

Handling

Format: Liquid

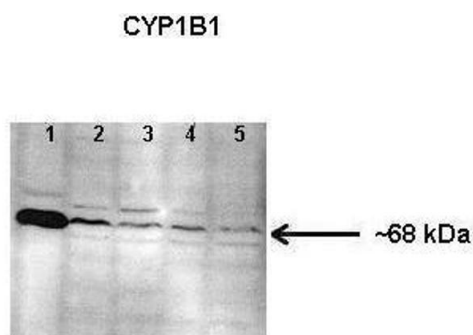
Handling

Concentration:	Lot specific
Buffer:	Liquid. Purified antibody supplied in 1x PBS buffer with 0.09 % (w/v) sodium azide and 2 % sucrose.
Preservative:	Sodium azide
Precaution of Use:	This product contains Sodium azide: a POISONOUS AND HAZARDOUS SUBSTANCE which should be handled by trained staff only.
Handling Advice:	Avoid repeated freeze-thaw cycles.
Storage:	-20 °C
Storage Comment:	For short term use, store at 2-8°C up to 1 week. For long term storage, store at -20°C in small aliquots to prevent freeze-thaw cycles.

Publications

Product cited in:	Guha, Bandyopadhyaya, Polumuri, Chumsri, Gade, Kalvakolanu, Ahmed et al.: "Nicotine promotes apoptosis resistance of breast cancer cells and enrichment of side population cells with cancer stem cell-like properties via a signaling cascade involving galectin-3, $\alpha 9$ nicotinic ..." in: Breast cancer research and treatment , Vol. 145, Issue 1, pp. 5-22, (2014) (PubMed).
-------------------	--

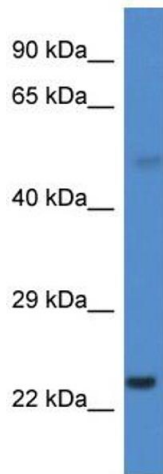
Images



Western Blotting

Image 1. Lanes: Lane 1: Human lung microsomal lysate
Lane 2-5: 150 ug mouse lung microsomal lysate
Primary Antibody Dilution: 1: 1000
Secondary Antibody: Anti-rabbit HRP
Secondary Antibody Dilution: 1: 10000
Gene Name: CYP1B1
Submitted by: Jing Peng, Fox Chase Cancer Center

See Immunoblot 2 Data and Customer Feedback for more information



Western Blotting

Image 2. WB Suggested Anti-CYP1B1 Antibody Titration:
0.2-1 ug/ml Positive Control: Human Liver