

Datasheet for ABIN2784625  
**anti-MTX2 antibody (N-Term)**



[Go to Product page](#)

1 Image

## Overview

Quantity:	100 µL
Target:	MTX2
Binding Specificity:	N-Term
Reactivity:	Human, Mouse, Rat, Cow, Dog, Guinea Pig, Horse, Rabbit
Host:	Rabbit
Clonality:	Polyclonal
Conjugate:	This MTX2 antibody is un-conjugated
Application:	Western Blotting (WB), Immunohistochemistry (IHC)

## Product Details

Immunogen:	The immunogen is a synthetic peptide directed towards the N terminal region of human MTX2
Sequence:	YIAAEPWPEN ATLYQQLKGE QILLSDNAAS LAVQAFLQMC NLPIKVVCRA
Predicted Reactivity:	Cow: 100%, Dog: 100%, Guinea Pig: 100%, Horse: 100%, Human: 100%, Mouse: 93%, Rabbit: 100%, Rat: 100%
Characteristics:	This is a rabbit polyclonal antibody against MTX2. It was validated on Western Blot using a cell lysate as a positive control.
Purification:	Affinity Purified

## Target Details

Target:	MTX2
---------	------

## Target Details

Alternative Name:	MTX2 ( <a href="#">MTX2 Products</a> )
Background:	<p>MTX2 is highly similar to the metaxin 2 protein from mouse, which has been shown to interact with the mitochondrial membrane protein metaxin 1. Because of this similarity, it is thought that the encoded protein is peripherally associated with the cytosolic face of the outer mitochondrial membrane and be involved in the import of proteins into the mitochondrion. The protein encoded by this gene is highly similar to the metaxin 2 protein from mouse, which has been shown to interact with the mitochondrial membrane protein metaxin 1. Because of this similarity, it is thought that the encoded protein is peripherally associated with the cytosolic face of the outer mitochondrial membrane and be involved in the import of proteins into the mitochondrion. Two transcript variants encoding different isoforms have been found for this gene.</p> <p>Alias Symbols: MGC111067</p> <p>Protein Interaction Partner: CCDC155, TADA2A, MMGT1, HNRNPR, SLC25A3, UBC, MINOS1, MTX1,</p> <p>Protein Size: 253</p>
Molecular Weight:	29 kDa
Gene ID:	10651
NCBI Accession:	<a href="#">NM_001006635</a> , <a href="#">NP_001006636</a>
UniProt:	<a href="#">Q8IZ68</a>

## Application Details

Application Notes:	Optimal working dilutions should be determined experimentally by the investigator.
Comment:	Antigen size: 253 AA
Restrictions:	For Research Use only

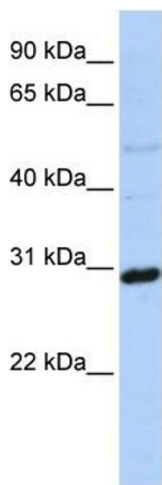
## Handling

Format:	Liquid
Concentration:	Lot specific
Buffer:	Liquid. Purified antibody supplied in 1x PBS buffer with 0.09 % (w/v) sodium azide and 2 % sucrose.
Preservative:	Sodium azide

Handling

Precaution of Use:	This product contains Sodium azide: a POISONOUS AND HAZARDOUS SUBSTANCE which should be handled by trained staff only.
Handling Advice:	Avoid repeated freeze-thaw cycles.
Storage:	-20 °C
Storage Comment:	For short term use, store at 2-8°C up to 1 week. For long term storage, store at -20°C in small aliquots to prevent freeze-thaw cycles.

Images



Western Blotting

**Image 1. WB Suggested Anti-MTX2 Antibody Titration:**

0.2-1 ug/ml

**ELISA Titer:** 1:12500

**Positive Control:** Jurkat cell lysate