



[Go to Product page](#)

Datasheet for ABIN2784626
anti-C20orf201 antibody (C-Term)

2 Images

Overview

Quantity:	100 µL
Target:	C20orf201
Binding Specificity:	C-Term
Reactivity:	Human, Dog
Host:	Rabbit
Clonality:	Polyclonal
Conjugate:	This C20orf201 antibody is un-conjugated
Application:	Western Blotting (WB)

Product Details

Immunogen:	The immunogen is a synthetic peptide directed towards the C terminal region of human LOC198437
Sequence:	PGRGGERGGA LPASAHAGPQ PLSPAAEARG DHPGGERGWH HLPAVTATES V
Predicted Reactivity:	Dog: 92%, Human: 100%
Characteristics:	This is a rabbit polyclonal antibody against LOC198437. It was validated on Western Blot.
Purification:	Affinity Purified

Target Details

Target:	C20orf201
Alternative Name:	C20orf201 (C20orf201 Products)

Target Details

Background: The function of LOC198437 remains unknown.
Alias Symbols: -
Protein Size: 240

Molecular Weight: 26 kDa

Gene ID: 198437

NCBI Accession: [NM_001007125](#), [NP_001007126](#)

Application Details

Application Notes: Optimal working dilutions should be determined experimentally by the investigator.

Comment: Antigen size: 240 AA

Restrictions: For Research Use only

Handling

Format: Liquid

Concentration: Lot specific

Buffer: Liquid. Purified antibody supplied in 1x PBS buffer with 0.09 % (w/v) sodium azide and 2 % sucrose.

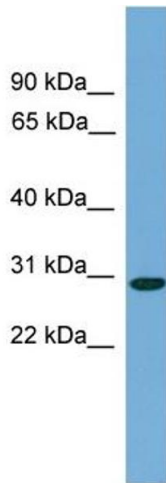
Preservative: Sodium azide

Precaution of Use: This product contains Sodium azide: a POISONOUS AND HAZARDOUS SUBSTANCE which should be handled by trained staff only.

Handling Advice: Avoid repeated freeze-thaw cycles.

Storage: -20 °C

Storage Comment: For short term use, store at 2-8°C up to 1 week. For long term storage, store at -20°C in small aliquots to prevent freeze-thaw cycles.



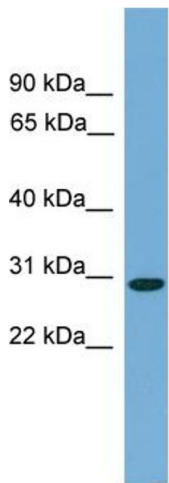
Western Blotting

Image 1. WB Suggested Anti-C20orf201 Antibody

Titration: 0.2-1 ug/ml

ELISA Titer: 1:312500

Positive Control: Human Liver



Rabbit Anti-LOC198437 Antibody
Catalog Number: ARP51791
Lot Number: QC29364
Lane: Fetal Liver Lysate

Antibody Titration: 1.0µg/ml
Gel Concentration: 12%

Western Blotting

Image 2. WB Suggested Anti-C20orf201

Antibody Titration: 0.2-1 µg/mL ELISA Titer: 1:12500

Positive Control: Human Liver