

Datasheet for ABIN2784646  
**anti-GM527 antibody (Middle Region)**[Go to Product page](#)

## 2 Images

## Overview

Quantity:	100 µL
Target:	GM527
Binding Specificity:	Middle Region
Reactivity:	Human, Mouse, Rat, Cow, Dog, Guinea Pig, Horse, Rabbit
Host:	Rabbit
Clonality:	Polyclonal
Conjugate:	This GM527 antibody is un-conjugated
Application:	Western Blotting (WB)

## Product Details

Immunogen:	The immunogen is a synthetic peptide directed towards the middle region of human C14orf28
Sequence:	FTTVKLLWIW DKMEKQQYKS EVHKASLIID LFGNEHDNFT KNLENLMSTI
Predicted Reactivity:	Cow: 100%, Dog: 100%, Guinea Pig: 100%, Horse: 100%, Human: 100%, Mouse: 100%, Rabbit: 100%, Rat: 100%
Characteristics:	This is a rabbit polyclonal antibody against C14orf28. It was validated on Western Blot.
Purification:	Affinity Purified

## Target Details

Target:	GM527
Alternative Name:	C14orf28 ( <a href="#">GM527 Products</a> )

## Target Details

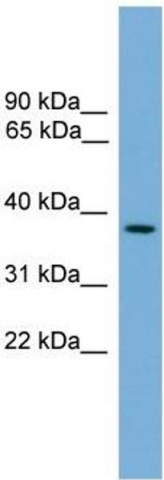
Background:	The function of C14orf28 remains unknown. Alias Symbols: DRIP1, c14_5270 Protein Size: 310
Molecular Weight:	36 kDa
Gene ID:	122525
NCBI Accession:	<a href="#">NM_001017923</a> , <a href="#">NP_001017923</a>
UniProt:	<a href="#">Q4W4Y0</a>

## Application Details

Application Notes:	Optimal working dilutions should be determined experimentally by the investigator.
Comment:	Antigen size: 310 AA
Restrictions:	For Research Use only

## Handling

Format:	Liquid
Concentration:	Lot specific
Buffer:	Liquid. Purified antibody supplied in 1x PBS buffer with 0.09 % (w/v) sodium azide and 2 % sucrose.
Preservative:	Sodium azide
Precaution of Use:	This product contains Sodium azide: a POISONOUS AND HAZARDOUS SUBSTANCE which should be handled by trained staff only.
Handling Advice:	Avoid repeated freeze-thaw cycles.
Storage:	-20 °C
Storage Comment:	For short term use, store at 2-8°C up to 1 week. For long term storage, store at -20°C in small aliquots to prevent freeze-thaw cycles.



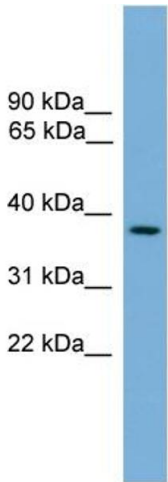
**Western Blotting**

**Image 1. WB Suggested Anti-C14orf28 Antibody Titration:**

0.2-1 ug/ml

**ELISA Titer:** 1:312500

**Positive Control:** Human Muscle



**Rabbit Anti-C14orf28 Antibody**  
**Catalog Number:** ARP51826  
**Lot Number:** QC29366  
**Lane:** Fetal Muscle Lysate

**Antibody Titration:** 1.0µg/ml  
**Gel Concentration:** 12%

**Western Blotting**

**Image 2. WB Suggested Anti-C14orf28**

Antibody Titration: 0.2-1 µg/mL ELISA Titer: 1::12500

Positive Control: Human Muscle