

Datasheet for ABIN2784658  
**anti-LRRC17 antibody (Middle Region)**[Go to Product page](#)

## 1 Image

## Overview

Quantity:	100 µL
Target:	LRRC17
Binding Specificity:	Middle Region
Reactivity:	Human, Horse, Mouse, Rabbit, Rat, Cow, Dog, Guinea Pig, Zebrafish (Danio rerio)
Host:	Rabbit
Clonality:	Polyclonal
Conjugate:	This LRRC17 antibody is un-conjugated
Application:	Western Blotting (WB)

## Product Details

Immunogen:	The immunogen is a synthetic peptide directed towards the middle region of human LRRC17
Sequence:	YVFPIQTLDC KRKELKKVPN NIPPDIVKLD LSYNKINQLR PKEFEDVHEL
Predicted Reactivity:	Cow: 93%, Dog: 100%, Guinea Pig: 86%, Horse: 86%, Human: 100%, Mouse: 86%, Rabbit: 93%, Rat: 100%, Zebrafish: 79%
Characteristics:	This is a rabbit polyclonal antibody against LRRC17. It was validated on Western Blot using a cell lysate as a positive control.
Purification:	Affinity Purified

## Target Details

Target:	LRRC17
---------	--------

## Target Details

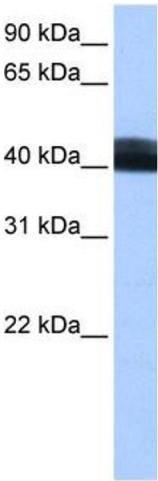
Alternative Name:	LRRC17 ( <a href="#">LRRC17 Products</a> )
Background:	LRRC17 contains 6 LRR (leucine-rich) repeats. The exact function of LRRC17 remains unknown. Alias Symbols: P37NB Protein Size: 441
Molecular Weight:	52 kDa
Gene ID:	10234
NCBI Accession:	<a href="#">NM_001031692</a> , <a href="#">NP_001026862</a>
UniProt:	<a href="#">Q8N6Y2</a>

## Application Details

Application Notes:	Optimal working dilutions should be determined experimentally by the investigator.
Comment:	Antigen size: 441 AA
Restrictions:	For Research Use only

## Handling

Format:	Liquid
Concentration:	Lot specific
Buffer:	Liquid. Purified antibody supplied in 1x PBS buffer with 0.09 % (w/v) sodium azide and 2 % sucrose.
Preservative:	Sodium azide
Precaution of Use:	This product contains Sodium azide: a POISONOUS AND HAZARDOUS SUBSTANCE which should be handled by trained staff only.
Handling Advice:	Avoid repeated freeze-thaw cycles.
Storage:	-20 °C
Storage Comment:	For short term use, store at 2-8°C up to 1 week. For long term storage, store at -20°C in small aliquots to prevent freeze-thaw cycles.



**Western Blotting**

**Image 1. WB Suggested Anti-LRRC17 Antibody Titration:**

0.2-1 ug/ml

**Positive Control:** MCF7 cell lysate