

Datasheet for ABIN2784659  
**anti-RIBC1 antibody (Middle Region)**[Go to Product page](#)

## 1 Image

## Overview

Quantity:	100 µL
Target:	RIBC1
Binding Specificity:	Middle Region
Reactivity:	Human, Cow, Dog, Horse, Rabbit, Mouse, Pig, Rat
Host:	Rabbit
Clonality:	Polyclonal
Conjugate:	This RIBC1 antibody is un-conjugated
Application:	Western Blotting (WB)

## Product Details

Immunogen:	The immunogen is a synthetic peptide directed towards the middle region of human RIBC1
Sequence:	ANANKAQAAV QAGRQRCERQ REQKANLAEI QHQSTDLLT ENPQVAQHMP
Predicted Reactivity:	Cow: 86%, Dog: 86%, Horse: 79%, Human: 100%, Mouse: 92%, Pig: 86%, Rabbit: 79%, Rat: 92%
Characteristics:	This is a rabbit polyclonal antibody against RIBC1. It was validated on Western Blot using a cell lysate as a positive control.
Purification:	Affinity Purified

## Target Details

Target:	RIBC1
Alternative Name:	RIBC1 ( <a href="#">RIBC1 Products</a> )

## Target Details

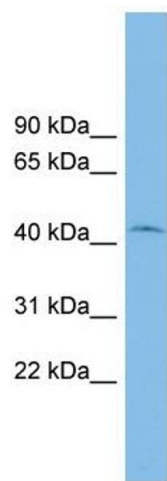
Background:	The function of this protein remains unknown. Alias Symbols: 2610028I09Rik, FLJ32783, MGC46233 Protein Interaction Partner: RINT1, TEX11, EMILIN1, TRIM27, KRT31, KRT15, GOLGA2, Protein Size: 379
Molecular Weight:	44 kDa
Gene ID:	158787
NCBI Accession:	<a href="#">NM_001031745</a> , <a href="#">NP_001026915</a>
UniProt:	<a href="#">Q8N443</a>

## Application Details

Application Notes:	Optimal working dilutions should be determined experimentally by the investigator.
Comment:	Antigen size: 379 AA
Restrictions:	For Research Use only

## Handling

Format:	Liquid
Concentration:	Lot specific
Buffer:	Liquid. Purified antibody supplied in 1x PBS buffer with 0.09 % (w/v) sodium azide and 2 % sucrose.
Preservative:	Sodium azide
Precaution of Use:	This product contains Sodium azide: a POISONOUS AND HAZARDOUS SUBSTANCE which should be handled by trained staff only.
Handling Advice:	Avoid repeated freeze-thaw cycles.
Storage:	-20 °C
Storage Comment:	For short term use, store at 2-8°C up to 1 week. For long term storage, store at -20°C in small aliquots to prevent freeze-thaw cycles.



Western Blotting

**Image 1.** WB Suggested Anti-RIBC1 Antibody Titration: 0.2-1 ug/ml ELISA Titer: 1:62500 Positive Control: COLO205 cell lysate