

Datasheet for ABIN2784665
anti-C19orf55 antibody (Middle Region)[Go to Product page](#)

1 Image

Overview

Quantity:	100 µL
Target:	C19orf55
Binding Specificity:	Middle Region
Reactivity:	Cow, Dog, Guinea Pig, Horse, Human, Mouse, Rabbit, Rat
Host:	Rabbit
Clonality:	Polyclonal
Conjugate:	This C19orf55 antibody is un-conjugated
Application:	Western Blotting (WB)

Product Details

Immunogen:	The immunogen is a synthetic peptide directed towards the middle region of human C19orf55
Sequence:	IKQNLHTWNS SLLDLETLSL QSRAARLLKR SKASISSSSS LSPSDASTSS
Predicted Reactivity:	Cow: 100%, Dog: 100%, Guinea Pig: 100%, Horse: 100%, Human: 100%, Mouse: 100%, Rabbit: 92%, Rat: 92%
Characteristics:	This is a rabbit polyclonal antibody against C19orf55. It was validated on Western Blot using a cell lysate as a positive control.
Purification:	Affinity Purified

Target Details

Target:	C19orf55
---------	----------

Target Details

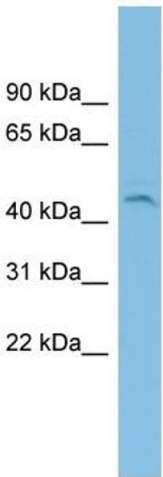
Alternative Name:	C19orf55 (C19orf55 Products)
Background:	The function of this protein remains unknown. Alias Symbols: DKFZp434C2231, FLJ30657, MGC131952 Protein Interaction Partner: ELAVL1, Protein Size: 425
Molecular Weight:	45 kDa
Gene ID:	148137
NCBI Accession:	NM_001039887 , NP_001034976
UniProt:	Q2NL68

Application Details

Application Notes:	Optimal working dilutions should be determined experimentally by the investigator.
Comment:	Antigen size: 425 AA
Restrictions:	For Research Use only

Handling

Format:	Liquid
Concentration:	Lot specific
Buffer:	Liquid. Purified antibody supplied in 1x PBS buffer with 0.09 % (w/v) sodium azide and 2 % sucrose.
Preservative:	Sodium azide
Precaution of Use:	This product contains Sodium azide: a POISONOUS AND HAZARDOUS SUBSTANCE which should be handled by trained staff only.
Handling Advice:	Avoid repeated freeze-thaw cycles.
Storage:	-20 °C
Storage Comment:	For short term use, store at 2-8°C up to 1 week. For long term storage, store at -20°C in small aliquots to prevent freeze-thaw cycles.



Western Blotting

Image 1. WB Suggested Anti-C19orf55 Antibody Titration:
0.2-1 ug/ml ELISA Titer: 1:2500 Positive Control: NCI-H226
cell lysate