

Datasheet for ABIN2784673
anti-TOM1L2 antibody (Middle Region)[Go to Product page](#)

1 Image

Overview

Quantity:	100 µL
Target:	TOM1L2
Binding Specificity:	Middle Region
Reactivity:	Human, Mouse, Rat, Dog, Horse, Rabbit, Zebrafish (Danio rerio), Cow, Guinea Pig
Host:	Rabbit
Clonality:	Polyclonal
Conjugate:	This TOM1L2 antibody is un-conjugated
Application:	Western Blotting (WB)

Product Details

Immunogen:	The immunogen is a synthetic peptide directed towards the middle region of human TOM1L2
Sequence:	QPSVMDDIEV WLRTDLKGDD LEEGVTSSEF DKFLEERAKA AEMVPDLPSP
Predicted Reactivity:	Cow: 100%, Dog: 100%, Guinea Pig: 100%, Horse: 100%, Human: 100%, Mouse: 100%, Rabbit: 100%, Rat: 100%, Zebrafish: 100%
Characteristics:	This is a rabbit polyclonal antibody against TOM1L2. It was validated on Western Blot using a cell lysate as a positive control.
Purification:	Affinity Purified

Target Details

Target:	TOM1L2
---------	--------

Target Details

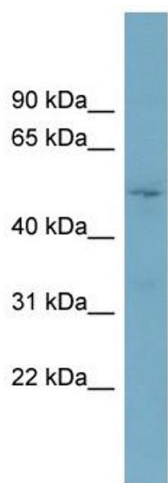
Alternative Name:	TOM1L2 (TOM1L2 Products)
Background:	<p>TOM1L2 has a probable role in protein transport. TOM1L2 may regulate growth factor-induced mitogenic signaling.</p> <p>Alias Symbols: FLJ32746</p> <p>Protein Interaction Partner: UBC, BAG3, RNF11, LAPTM5, MYO6, SRXN1, SIN3A, DSTN, AHCYL1, UBA2, LAGE3, SULT1A1, S100A6, S100A4, RCN1, IGBP1, DFFA, SERPINH1, APP, TOLLIP, CLTC, NEDD4,</p> <p>Protein Size: 507</p>
Molecular Weight:	55 kDa
Gene ID:	146691
NCBI Accession:	NM_001082968 , NP_001076437
UniProt:	Q6ZVM7

Application Details

Application Notes:	Optimal working dilutions should be determined experimentally by the investigator.
Comment:	Antigen size: 507 AA
Restrictions:	For Research Use only

Handling

Format:	Liquid
Concentration:	Lot specific
Buffer:	Liquid. Purified antibody supplied in 1x PBS buffer with 0.09 % (w/v) sodium azide and 2 % sucrose.
Preservative:	Sodium azide
Precaution of Use:	This product contains Sodium azide: a POISONOUS AND HAZARDOUS SUBSTANCE which should be handled by trained staff only.
Handling Advice:	Avoid repeated freeze-thaw cycles.
Storage:	-20 °C
Storage Comment:	For short term use, store at 2-8°C up to 1 week. For long term storage, store at -20°C in small aliquots to prevent freeze-thaw cycles.



Western Blotting

Image 1. WB Suggested Anti-TOM1L2 Antibody Titration:
0.2-1 ug/ml

Positive Control: OVCAR-3 cell lysate