

Datasheet for ABIN2784677
anti-COPA antibody (N-Term)[Go to Product page](#)

1 Image

2 Publications

Overview

Quantity:	100 µL
Target:	COPA
Binding Specificity:	N-Term
Reactivity:	Human, Mouse, Rat, Cow, Dog, Horse, Rabbit, Zebrafish (Danio rerio), Guinea Pig, Saccharomyces cerevisiae, Goat
Host:	Rabbit
Clonality:	Polyclonal
Conjugate:	This COPA antibody is un-conjugated
Application:	Western Blotting (WB)

Product Details

Immunogen:	The immunogen is a synthetic peptide directed towards the N terminal region of human COPA
Sequence:	PWILTS LHNG VIQLWDYRMC TLIDKFDEHD GPVRGIDFHK QQPLFVSGGD
Predicted Reactivity:	Cow: 100%, Dog: 100%, Goat: 86%, Guinea Pig: 100%, Horse: 100%, Human: 100%, Mouse: 100%, Rabbit: 100%, Rat: 100%, Yeast: 93%, Zebrafish: 100%
Characteristics:	This is a rabbit polyclonal antibody against COPA. It was validated on Western Blot using a cell lysate as a positive control.
Purification:	Affinity Purified

Target Details

Target:	COPA
---------	------

Target Details

Alternative Name: COPA ([COPA Products](#))

Background: In eukaryotic cells, protein transport between the endoplasmic reticulum and Golgi compartments is mediated in part by non-clathrin-coated vesicular coat proteins (COPs). Seven coat proteins have been identified, and they represent subunits of a complex known as coatomer. The subunits are designated alpha-COP, beta-COP, beta-prime-COP, gamma-COP, delta-COP, epsilon-COP, and zeta-COP. The alpha-COP, encoded by COPA, shares high sequence similarity with RET1P, the alpha subunit of the coatomer complex in yeast. Also, the N-terminal 25 amino acids of alpha-COP encode the bioactive peptide, xenin, which stimulates exocrine pancreatic secretion and may act as a gastrointestinal hormone. In eukaryotic cells, protein transport between the endoplasmic reticulum and Golgi compartments is mediated in part by non-clathrin-coated vesicular coat proteins (COPs). Seven coat proteins have been identified, and they represent subunits of a complex known as coatomer. The subunits are designated alpha-COP, beta-COP, beta-prime-COP, gamma-COP, delta-COP, epsilon-COP, and zeta-COP. The alpha-COP, encoded by COPA, shares high sequence similarity with RET1P, the alpha subunit of the coatomer complex in yeast. Also, the N-terminal 25 amino acids of alpha-COP encode the bioactive peptide, xenin, which stimulates exocrine pancreatic secretion and may act as a gastrointestinal hormone. Alternative splicing results in multiple splice forms encoding distinct isoforms.

Alias Symbols: FLJ26320, HEP-COP

Protein Interaction Partner: UBC, SUMO2, SMN1, STAU1, NUDCD1, SUMO1, NEDD8, RPA3, RPA2, RPA1, SUZ12, RNF2, COPZ1, DHX38, COPB2, CCT3, TCP1, SEPT2, ARCN1, UBD, VCAM1, ITGA4, COPB1, COPG2, COPG1, COPE, SEPT9, SEC23A, SEC24C, UBXN6, FBXO6, LMAN1, SACM1L, DDX20, TMED10, GEMIN2, COPA, CDK

Protein Size: 1224

Molecular Weight: 135 kDa

Gene ID: 1314

NCBI Accession: [NM_004371](#), [NP_004362](#)

UniProt: [P53621](#)

Pathways: [Hormone Activity](#)

Application Details

Application Notes: Optimal working dilutions should be determined experimentally by the investigator.

Comment: Antigen size: 1224 AA

Application Details

Restrictions: For Research Use only

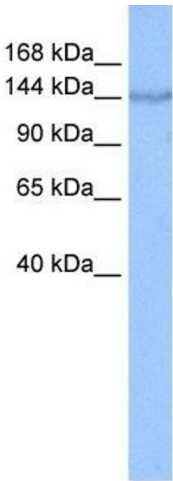
Handling

Format:	Liquid
Concentration:	Lot specific
Buffer:	Liquid. Purified antibody supplied in 1x PBS buffer with 0.09 % (w/v) sodium azide and 2 % sucrose.
Preservative:	Sodium azide
Precaution of Use:	This product contains Sodium azide: a POISONOUS AND HAZARDOUS SUBSTANCE which should be handled by trained staff only.
Handling Advice:	Avoid repeated freeze-thaw cycles.
Storage:	-20 °C
Storage Comment:	For short term use, store at 2-8°C up to 1 week. For long term storage, store at -20°C in small aliquots to prevent freeze-thaw cycles.

Publications

Product cited in: Mehrle, Rosenfelder, Schupp, del Val, Arlt, Hahne, Bechtel, Simpson, Hofmann, Hide, Glatting, Huber, Pepperkok, Poustka, Wiemann: "The LIFEdb database in 2006." in: **Nucleic acids research**, Vol. 34, Issue Database issue, pp. D415-8, (2005) ([PubMed](#)).

Images



Western Blotting

Image 1. WB Suggested Anti-COPA Antibody Titration:

0.2-1 ug/ml

Positive Control: Hela cell lysate