



[Go to Product page](#)

Datasheet for ABIN2784681

## anti-FAM54A antibody (C-Term)

### 1 Image

#### Overview

Quantity:	100 µL
Target:	FAM54A
Binding Specificity:	C-Term
Reactivity:	Human, Horse
Host:	Rabbit
Clonality:	Polyclonal
Conjugate:	This FAM54A antibody is un-conjugated
Application:	Western Blotting (WB)

#### Product Details

Sequence:	ENRSWESSPF SSPETSRFGH HISQSEGQRT KEEMVNTKAV DQGISNTSLL
Predicted Reactivity:	Horse: 100%, Human: 100%
Characteristics:	This is a rabbit polyclonal antibody against FAM54A. It was validated on Western Blot.
Purification:	Affinity Purified

#### Target Details

Target:	FAM54A
Alternative Name:	FAM54A ( <a href="#">FAM54A Products</a> )
Background:	FAM54A belongs to the MTFR1/FAM54 family. The function of the FAM54A protein is not known.

## Target Details

---

Alias Symbols: DUFD1, FAM54A

Protein Interaction Partner: TFIP11, MAGEA12, GOLGA2, TRIM23, ALAS1, DICER1, UBC, CUL3,  
Protein Size: 385

---

Molecular Weight: 42 kDa

---

Gene ID: 113115

---

NCBI Accession: [NM\\_138419](#), [NP\\_612428](#)

---

UniProt: [Q6P444](#)

## Application Details

---

Application Notes: Optimal working dilutions should be determined experimentally by the investigator.

---

Comment: Antigen size: 385 AA

---

Restrictions: For Research Use only

## Handling

---

Format: Liquid

---

Concentration: Lot specific

---

Buffer: Liquid. Purified antibody supplied in 1x PBS buffer with 0.09 % (w/v) sodium azide and 2 % sucrose.

---

Preservative: Sodium azide

---

Precaution of Use: This product contains Sodium azide: a POISONOUS AND HAZARDOUS SUBSTANCE which should be handled by trained staff only.

---

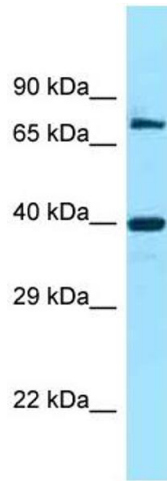
Handling Advice: Avoid repeated freeze-thaw cycles.

---

Storage: -20 °C

---

Storage Comment: For short term use, store at 2-8°C up to 1 week. For long term storage, store at -20°C in small aliquots to prevent freeze-thaw cycles.



### Western Blotting

**Image 1.** WB Suggested Anti-FAM54A Antibody Titration:  
1.0 ug/ml Positive Control: 721\_B Whole Cell