

Datasheet for ABIN2784689

anti-gamma 1 Adaptin antibody (C-Term)

4 Images

[Go to Product page](#)

Overview

Quantity:	100 µL
Target:	gamma 1 Adaptin (AP1G1)
Binding Specificity:	C-Term
Reactivity:	Human, Mouse, Rat, Cow, Dog, Pig, Rabbit, Horse
Host:	Rabbit
Clonality:	Polyclonal
Conjugate:	This gamma 1 Adaptin antibody is un-conjugated
Application:	Western Blotting (WB)

Product Details

Immunogen:	The immunogen is a synthetic peptide directed towards the C terminal region of human AP1G1
Sequence:	DHMRSALLER MPVMEKVTTN GPTEIVQTNG ETEPAPLETK PPPSGPQPTS
Predicted Reactivity:	Cow: 86%, Dog: 100%, Horse: 100%, Human: 100%, Mouse: 100%, Pig: 100%, Rabbit: 100%, Rat: 100%
Characteristics:	This is a rabbit polyclonal antibody against AP1G1. It was validated on Western Blot using a cell lysate as a positive control.
Purification:	Affinity Purified

Target Details

Target:	gamma 1 Adaptin (AP1G1)
---------	-------------------------

Target Details

Alternative Name: AP1G1 ([AP1G1 Products](#))

Background: Adaptins are important components of clathrin-coated vesicles transporting ligand-receptor complexes from the plasma membrane or from the trans-Golgi network to lysosomes. The adaptin family of proteins is composed of four classes of molecules named alpha, beta-, beta prime- and gamma- adaptins. Adaptins, together with medium and small subunits, form a heterotetrameric complex called an adaptor, whose role is to promote the formation of clathrin-coated pits and vesicles. AP1G1 is a gamma-adaptin protein and it belongs to the adaptor complexes large subunits family. Adaptins are important components of clathrin-coated vesicles transporting ligand-receptor complexes from the plasma membrane or from the trans-Golgi network to lysosomes. The adaptin family of proteins is composed of four classes of molecules named alpha, beta-, beta prime- and gamma- adaptins. Adaptins, together with medium and small subunits, form a heterotetrameric complex called an adaptor, whose role is to promote the formation of clathrin-coated pits and vesicles. The protein encoded by this gene is a gamma-adaptin protein and it belongs to the adaptor complexes large subunits family. Two transcript variants encoding different isoforms have been found for this gene.

Alias Symbols: ADTG, CLAPG1, MGC18255

Protein Interaction Partner: UBL7, AP1S2, UBC, EGFR, GPRASP2, PASK, ASB10, PRRC1, OSBPL11, NPM3, TRIP10, KIF13A, ZNF512B, SYNRG, RABEP1, AP1M1, MAP1A, AP1S1, AP2M1, AP1B1, CLINT1, CLTC, gag, JUN, AP1AR, RABGEF1, AFTPH, DNER, AP1M2, AP1G1, SYP, SPTB, ARF1, AP2S1, NECAP2, NECAP1, RAB5A

Protein Size: 822

Molecular Weight: 91 kDa

Gene ID: 164

NCBI Accession: [NM_001128](#), [NP_001119](#)

UniProt: [O43747](#)

Application Details

Application Notes: Optimal working dilutions should be determined experimentally by the investigator.

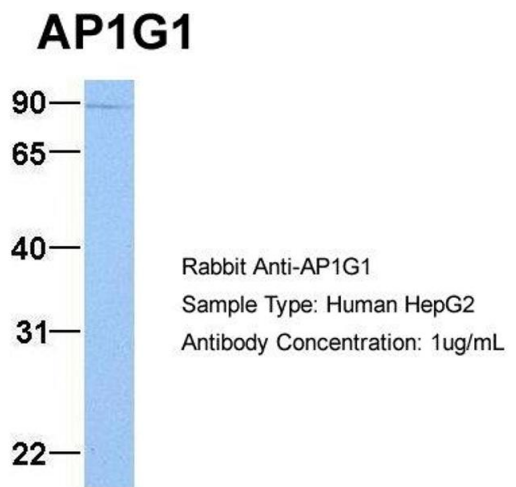
Comment: Antigen size: 822 AA

Restrictions: For Research Use only

Handling

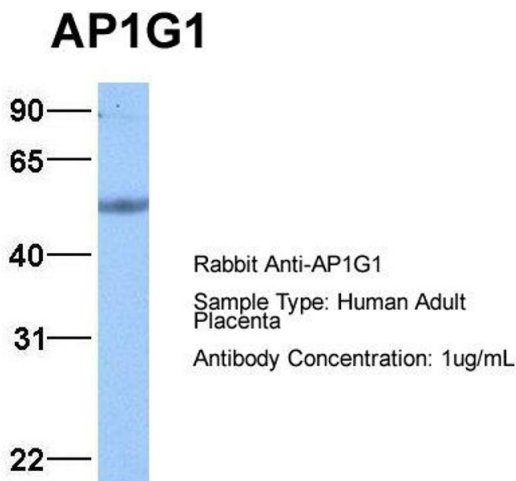
Format:	Liquid
Concentration:	Lot specific
Buffer:	Liquid. Purified antibody supplied in 1x PBS buffer with 0.09 % (w/v) sodium azide and 2 % sucrose.
Preservative:	Sodium azide
Precaution of Use:	This product contains Sodium azide: a POISONOUS AND HAZARDOUS SUBSTANCE which should be handled by trained staff only.
Handling Advice:	Avoid repeated freeze-thaw cycles.
Storage:	-20 °C
Storage Comment:	For short term use, store at 2-8°C up to 1 week. For long term storage, store at -20°C in small aliquots to prevent freeze-thaw cycles.

Images



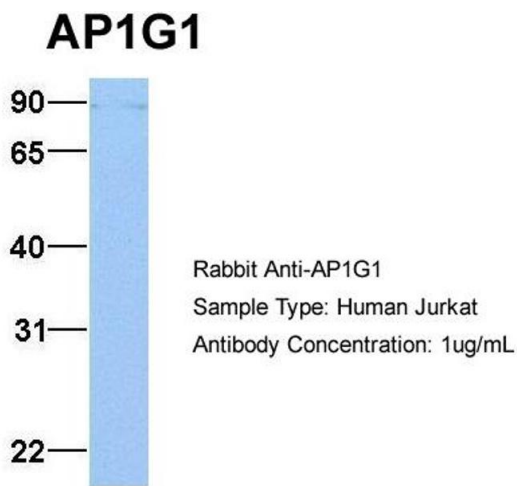
Western Blotting

Image 1. Host: Rabbit Target Name: AP1G1 Sample Type: HepG2 Antibody Dilution: 1.0ug/ml AP1G1 is supported by BioGPS gene expression data to be expressed in HepG2



Western Blotting

Image 2. Host: Rabbit Target Name: AP1G1 Sample Type: Human Adult Placenta Antibody Dilution: 1.0ug/ml



Western Blotting

Image 3. Host: Rabbit Target Name: AP1G1 Sample Type: Jurkat Antibody Dilution: 1.0ug/ml AP1G1 is supported by BioGPS gene expression data to be expressed in Jurkat

Please check the [product details page](#) for more images. Overall 4 images are available for ABIN2784689.