

Datasheet for ABIN2784692
anti-CHAD antibody (Middle Region)[Go to Product page](#)

1 Image

Overview

| | |
|----------------------|---|
| Quantity: | 100 µL |
| Target: | CHAD |
| Binding Specificity: | Middle Region |
| Reactivity: | Human, Mouse, Rat, Dog, Horse, Cow, Guinea Pig, Pig |
| Host: | Rabbit |
| Clonality: | Polyclonal |
| Conjugate: | This CHAD antibody is un-conjugated |
| Application: | Western Blotting (WB) |

Product Details

| | |
|-----------------------|--|
| Immunogen: | The immunogen is a synthetic peptide directed towards the middle region of human CHAD |
| Sequence: | VDRNQLSSYP SAALSKLRVV EELKLSHNPL KSIPDNAFQS FGRYLETWL |
| Predicted Reactivity: | Cow: 100%, Dog: 100%, Guinea Pig: 86%, Horse: 100%, Human: 100%, Mouse: 100%, Pig: 93%, Rat: 100% |
| Characteristics: | This is a rabbit polyclonal antibody against CHAD. It was validated on Western Blot using a cell lysate as a positive control. |
| Purification: | Affinity Purified |

Target Details

| | |
|---------|------|
| Target: | CHAD |
|---------|------|

Target Details

| | |
|-------------------|---|
| Alternative Name: | CHAD (CHAD Products) |
| Background: | <p>Chondroadherin is a cartilage matrix protein thought to mediate adhesion of isolated chondrocytes. CHAD contains 11 leucine-rich repeats flanked by cysteine-rich regions. The chondroadherin messenger RNA is present in chondrocytes at all ages. Chondroadherin is a cartilage matrix protein thought to mediate adhesion of isolated chondrocytes. The protein contains 11 leucine-rich repeats flanked by cysteine-rich regions. The chondroadherin messenger RNA is present in chondrocytes at all ages.</p> <p>Alias Symbols: SLRR4A</p> <p>Protein Interaction Partner: COL2A1,</p> <p>Protein Size: 359</p> |
| Molecular Weight: | 38 kDa |
| Gene ID: | 1101 |
| NCBI Accession: | NM_001267 , NP_001258 |
| UniProt: | O15335 |

Application Details

| | |
|--------------------|--|
| Application Notes: | Optimal working dilutions should be determined experimentally by the investigator. |
| Comment: | Antigen size: 359 AA |
| Restrictions: | For Research Use only |

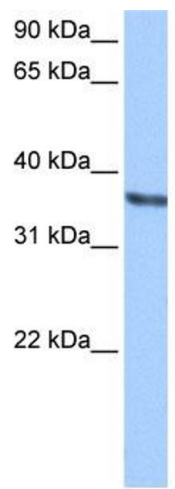
Handling

| | |
|--------------------|--|
| Format: | Liquid |
| Concentration: | Lot specific |
| Buffer: | Liquid. Purified antibody supplied in 1x PBS buffer with 0.09 % (w/v) sodium azide and 2 % sucrose. |
| Preservative: | Sodium azide |
| Precaution of Use: | This product contains Sodium azide: a POISONOUS AND HAZARDOUS SUBSTANCE which should be handled by trained staff only. |
| Handling Advice: | Avoid repeated freeze-thaw cycles. |
| Storage: | -20 °C |

Handling

Storage Comment: For short term use, store at 2-8°C up to 1 week. For long term storage, store at -20°C in small aliquots to prevent freeze-thaw cycles.

Images



Western Blotting

Image 1. WB Suggested Anti-CHAD Antibody Titration:

0.2-1 ug/ml

Positive Control: HepG2 cell lysate