



[Go to Product page](#)

Datasheet for ABIN2784698
anti-CLNS1A antibody (C-Term)

2 Images

Overview

Quantity:	100 µL
Target:	CLNS1A
Binding Specificity:	C-Term
Reactivity:	Human, Mouse, Rat, Dog, Rabbit, Cow, Guinea Pig, Horse, Zebrafish (Danio rerio)
Host:	Rabbit
Clonality:	Polyclonal
Conjugate:	This CLNS1A antibody is un-conjugated
Application:	Western Blotting (WB)

Product Details

Immunogen:	The immunogen is a synthetic peptide corresponding to a region of Mouse
Sequence:	ALHPDPEDED SDDYDGEEYD VEAHEQQGD IPTFYTYEEG LSHLTAEGQA
Predicted Reactivity:	Cow: 100%, Dog: 100%, Guinea Pig: 100%, Horse: 100%, Human: 100%, Mouse: 100%, Rabbit: 100%, Rat: 100%, Zebrafish: 75%
Characteristics:	This is a rabbit polyclonal antibody against Clns1a. It was validated on Western Blot.
Purification:	Affinity Purified

Target Details

Target:	CLNS1A
Alternative Name:	Clns1a (CLNS1A Products)

Target Details

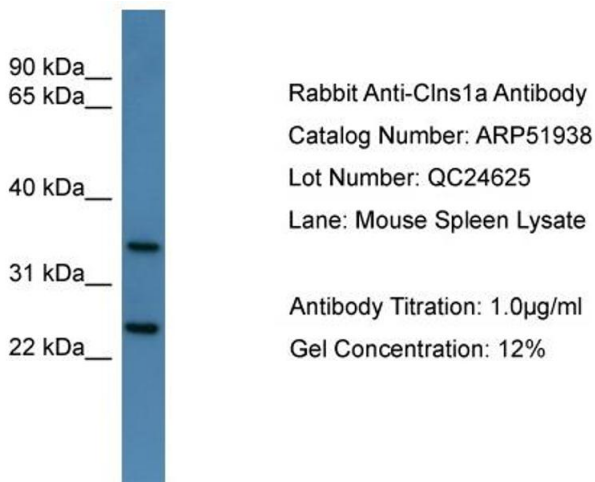
Background:	The function of Clns1a remains unknown. Alias Symbols: 2610036D06Rik, 2610100004Rik, Clci, Clcni, ICLN Protein Size: 241
Molecular Weight:	27 kDa
Gene ID:	12729
NCBI Accession:	NM_023671 , NP_076160
UniProt:	Q923F1
Pathways:	Ribonucleoprotein Complex Subunit Organization

Application Details

Application Notes:	Optimal working dilutions should be determined experimentally by the investigator.
Comment:	Antigen size: 241 AA
Restrictions:	For Research Use only

Handling

Format:	Liquid
Concentration:	Lot specific
Buffer:	Liquid. Purified antibody supplied in 1x PBS buffer with 0.09 % (w/v) sodium azide and 2 % sucrose.
Preservative:	Sodium azide
Precaution of Use:	This product contains Sodium azide: a POISONOUS AND HAZARDOUS SUBSTANCE which should be handled by trained staff only.
Handling Advice:	Avoid repeated freeze-thaw cycles.
Storage:	-20 °C
Storage Comment:	For short term use, store at 2-8°C up to 1 week. For long term storage, store at -20°C in small aliquots to prevent freeze-thaw cycles.

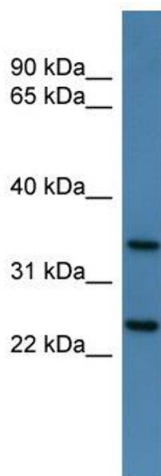


Western Blotting

Image 1. WB Suggested Anti-Clns1a

Antibody Titration: 0.2-1 µg/mL ELISA Titer: 1:12500

Positive Control: Mouse Spleen



Western Blotting

Image 2. WB Suggested Anti-Clns1a Antibody Titration:

0.2-1 ug/ml

ELISA Titer: 1:312500

Positive Control: Mouse Spleen