

Datasheet for ABIN2784707  
**anti-DPH1 antibody (N-Term)**

## 2 Images

[Go to Product page](#)

## Overview

Quantity:	100 µL
Target:	DPH1
Binding Specificity:	N-Term
Reactivity:	Human, Mouse, Rat, Dog, Guinea Pig, Horse, Rabbit, Cow, Saccharomyces cerevisiae, Zebrafish (Danio rerio)
Host:	Rabbit
Clonality:	Polyclonal
Conjugate:	This DPH1 antibody is un-conjugated
Application:	Western Blotting (WB), Immunohistochemistry (IHC)

## Product Details

Immunogen:	The immunogen is a synthetic peptide directed towards the N terminal region of human DPH1
Sequence:	NQIPPEILKN PQLQAAIRVL PSNYNFEIPK TIWRIQQAQA KKVALQMPEG
Predicted Reactivity:	Cow: 93%, Dog: 100%, Guinea Pig: 100%, Horse: 100%, Human: 100%, Mouse: 100%, Rabbit: 100%, Rat: 100%, Yeast: 92%, Zebrafish: 85%
Characteristics:	This is a rabbit polyclonal antibody against DPH1. It was validated on Western Blot using a cell lysate as a positive control.
Purification:	Affinity Purified

## Target Details

Target:	DPH1
---------	------

## Target Details

Alternative Name:	DPH1 ( <a href="#">DPH1 Products</a> )
Background:	<p>Diphthamide is a unique posttranslationally modified histidine found only in translation elongation factor-2 (EEF2, MIM 130610). This modification is conserved from archaeobacteria to humans and serves as the target for ADP-ribosylation and inactivation of EEF2 by diphtheria toxin (DT) and Pseudomonas exotoxin A. DPH1 is 1 of several enzymes involved in synthesis of diphthamide in EEF2 (Liu et al., 2004 [PubMed 15485916]).</p> <p>Alias Symbols: DPH2L, DPH2L1, FLJ33211, OVCA1</p> <p>Protein Interaction Partner: UBC, TFCP2, MMS19, UBD, TP63, TP73, TP53, RBM8A, HSPA5,</p> <p>Protein Size: 443</p>
Molecular Weight:	49 kDa
Gene ID:	1801
NCBI Accession:	<a href="#">NM_001383</a> , <a href="#">NP_001374</a>
UniProt:	<a href="#">Q9BZG8</a>

## Application Details

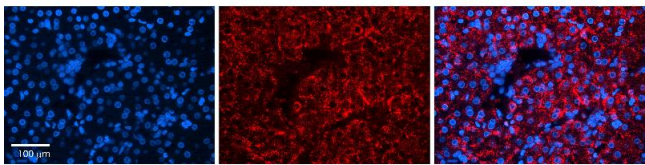
Application Notes:	Optimal working dilutions should be determined experimentally by the investigator.
Comment:	Antigen size: 443 AA
Restrictions:	For Research Use only

## Handling

Format:	Liquid
Concentration:	Lot specific
Buffer:	Liquid. Purified antibody supplied in 1x PBS buffer with 0.09 % (w/v) sodium azide and 2 % sucrose.
Preservative:	Sodium azide
Precaution of Use:	This product contains Sodium azide: a POISONOUS AND HAZARDOUS SUBSTANCE which should be handled by trained staff only.
Handling Advice:	Avoid repeated freeze-thaw cycles.
Storage:	-20 °C
Storage Comment:	For short term use, store at 2-8°C up to 1 week. For long term storage, store at -20°C in small

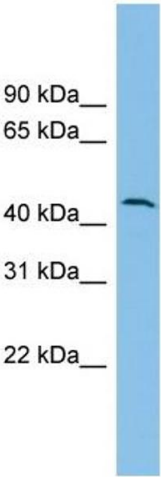
aliquots to prevent freeze-thaw cycles.

Images



Immunohistochemistry

**Image 1.** Rabbit Anti-DPH1 Antibody Catalog Number: ARP51955\_P050 Formalin Fixed Paraffin Embedded Tissue: Human Liver Tissue Observed Staining: Cytoplasm in hepatocytes Primary Antibody Concentration: 1:100 Other Working Concentrations: 1:600 Secondary Antibody: Donkey anti-Rabbit-Cy3 Secondary Antibody Concentration: 1:200 Magnification: 20X Exposure Time: 0.5 - 2.0 sec



Western Blotting

**Image 2.** WB Suggested Anti-DPH1 Antibody Titration: 0.2-1 ug/ml ELISA Titer: 1:1562500 Positive Control: RPMI 8226 cell lysate