

Datasheet for ABIN2784717
anti-CENPB antibody (C-Term)[Go to Product page](#)

1 Image

Overview

Quantity:	100 µL
Target:	CENPB
Binding Specificity:	C-Term
Reactivity:	Human, Mouse, Rat, Horse, Pig, Sheep, Cow, Saccharomyces cerevisiae, Zebrafish (Danio rerio)
Host:	Rabbit
Clonality:	Polyclonal
Conjugate:	This CENPB antibody is un-conjugated
Application:	Western Blotting (WB)

Product Details

Immunogen:	The immunogen is a synthetic peptide directed towards the C terminal region of human CENPB
Sequence:	GGEDSDSDSE EEDDEEEDDE DEDDDDDDEED GDEVPVPSFG EAMAYFAMVK
Predicted Reactivity:	Cow: 83%, Horse: 86%, Human: 100%, Mouse: 93%, Pig: 86%, Rat: 100%, Sheep: 86%, Yeast: 100%, Zebrafish: 75%
Characteristics:	This is a rabbit polyclonal antibody against CENPB. It was validated on Western Blot using a cell lysate as a positive control.
Purification:	Affinity Purified

Target Details

Target:	CENPB
---------	-------

Target Details

Alternative Name: CENPB ([CENPB Products](#))

Background: CENPB is a highly conserved protein that facilitates centromere formation. It is a DNA-binding protein that is derived from transposases of the pogo DNA transposon family. It contains a helix-loop-helix DNA binding motif at the N-terminus, and a dimerization domain at the C-terminus. This protein is proposed to play an important role in the assembly of specific centromere structures in interphase nuclei and on mitotic chromosomes. It is also considered a major centromere autoantigen recognized by sera from patients with anti-centromere antibodies. This gene product is a highly conserved protein that facilitates centromere formation. It is a DNA-binding protein that is derived from transposases of the pogo DNA transposon family. It contains a helix-loop-helix DNA binding motif at the N-terminus, and a dimerization domain at the C-terminus. The DNA binding domain recognizes and binds a 17-bp sequence (CENP-B box) in the centromeric alpha satellite DNA. This protein is proposed to play an important role in the assembly of specific centromere structures in interphase nuclei and on mitotic chromosomes. It is also considered a major centromere autoantigen recognized by sera from patients with anti-centromere antibodies. Publication Note: This RefSeq record includes a subset of the publications that are available for this gene. Please see the Entrez Gene record to access additional publications.

Alias Symbols: -

Protein Interaction Partner: UBC, RNF2, NR3C1, FBXO25, CENPA, APP, GFI1B, SUMO2, SMN1, PIN1, GSK3B, GADD45A, CSNK2B, CDKN1A, ANXA7, RPS6KA6, TK1, TAC1, TAF1D, PARP1, PARP2, HAND2, CENPB,

Protein Size: 599

Molecular Weight: 65 kDa

Gene ID: 1059

NCBI Accession: [NM_001810](#), [NP_001801](#)

UniProt: [P07199](#)

Application Details

Application Notes: Optimal working dilutions should be determined experimentally by the investigator.

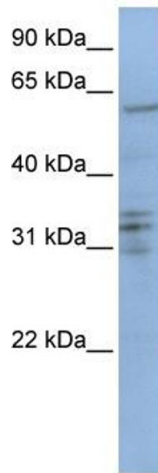
Comment: Antigen size: 599 AA

Restrictions: For Research Use only

Handling

Format:	Liquid
Concentration:	Lot specific
Buffer:	Liquid. Purified antibody supplied in 1x PBS buffer with 0.09 % (w/v) sodium azide and 2 % sucrose.
Preservative:	Sodium azide
Precaution of Use:	This product contains Sodium azide: a POISONOUS AND HAZARDOUS SUBSTANCE which should be handled by trained staff only.
Handling Advice:	Avoid repeated freeze-thaw cycles.
Storage:	-20 °C
Storage Comment:	For short term use, store at 2-8°C up to 1 week. For long term storage, store at -20°C in small aliquots to prevent freeze-thaw cycles.

Images



Western Blotting

Image 1. WB Suggested Anti-CENPB Antibody Titration:

0.2-1 ug/ml

ELISA Titer: 1:500

Positive Control: Jurkat cell lysate