

Datasheet for ABIN2784718  
**anti-CHN1 antibody (Middle Region)**



[Go to Product page](#)

1 Image

## Overview

Quantity:	100 µL
Target:	CHN1 (ARHGAP2)
Binding Specificity:	Middle Region
Reactivity:	Human, Mouse, Rat, Dog, Horse, Zebrafish (Danio rerio), Cow, Guinea Pig, Rabbit, Saccharomyces cerevisiae
Host:	Rabbit
Clonality:	Polyclonal
Conjugate:	This CHN1 antibody is un-conjugated
Application:	Western Blotting (WB)

## Product Details

Immunogen:	The immunogen is a synthetic peptide directed towards the middle region of human CHN1
Sequence:	KVYSCDLTTL VKAHTTKRPM VVDMCIREIE SRGLNSEGLY RVSGFSDLIE
Predicted Reactivity:	Cow: 93%, Dog: 86%, Guinea Pig: 100%, Horse: 100%, Human: 100%, Mouse: 100%, Rabbit: 93%, Rat: 100%, Yeast: 77%, Zebrafish: 86%
Characteristics:	This is a rabbit polyclonal antibody against CHN1. It was validated on Western Blot using a cell lysate as a positive control.
Purification:	Affinity Purified

## Target Details

Target:	CHN1 (ARHGAP2)
---------	----------------

## Target Details

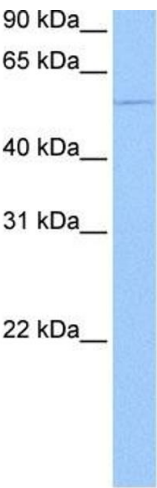
Alternative Name:	CHN1 ( <a href="#">ARHGAP2 Products</a> )
Background:	<p>CHN1 contains 1 phorbol-ester/DAG-type zinc finger, 1 Rho-GAP domain and 1 SH2 domain.</p> <p>CHN1 is a GTPase-activating protein for p21-rac and a phorbol ester receptor. It may play an important role in neuronal signal-transduction mechanisms.</p> <p>Alias Symbols: ARHGAP2, CHN, RHOGAP2, NC, DURS2</p> <p>Protein Interaction Partner: HEMK1, NCK2, Grin2a, ERBB2, nef, MAPK8IP2, GTF3C1, CDK5R1, BMPR1B, RAC1, TGFBR1, RPS3A, CDK5, ACVR1,</p> <p>Protein Size: 459</p>
Molecular Weight:	53 kDa
Gene ID:	1123
NCBI Accession:	<a href="#">NM_001822</a> , <a href="#">NP_001813</a>
UniProt:	<a href="#">P15882</a>

## Application Details

Application Notes:	Optimal working dilutions should be determined experimentally by the investigator.
Comment:	Antigen size: 459 AA
Restrictions:	For Research Use only

## Handling

Format:	Liquid
Concentration:	Lot specific
Buffer:	Liquid. Purified antibody supplied in 1x PBS buffer with 0.09 % (w/v) sodium azide and 2 % sucrose.
Preservative:	Sodium azide
Precaution of Use:	This product contains Sodium azide: a POISONOUS AND HAZARDOUS SUBSTANCE which should be handled by trained staff only.
Handling Advice:	Avoid repeated freeze-thaw cycles.
Storage:	-20 °C
Storage Comment:	For short term use, store at 2-8°C up to 1 week. For long term storage, store at -20°C in small aliquots to prevent freeze-thaw cycles.



**Western Blotting**

**Image 1. WB Suggested Anti-CHN1 Antibody Titration:**  
0.2-1 ug/ml

**Positive Control:** Jurkat cell lysate