

Datasheet for ABIN2784726

anti-Cytochrome C1 antibody (C-Term)

1 Image

1 Publication



[Go to Product page](#)

Overview

Quantity:	100 µL
Target:	Cytochrome C1 (CYC1)
Binding Specificity:	C-Term
Reactivity:	Human, Mouse, Rat, Cow, Dog, Guinea Pig, Horse, Zebrafish (Danio rerio), Goat
Host:	Rabbit
Clonality:	Polyclonal
Conjugate:	This Cytochrome C1 antibody is un-conjugated
Application:	Western Blotting (WB)

Product Details

Sequence:	GGEDYVFSLL TGYCEPPTGV SLREGLYFNP YFPGQAIGMA PPIYTEVLEY
Predicted Reactivity:	Cow: 100%, Dog: 100%, Goat: 83%, Guinea Pig: 100%, Horse: 100%, Human: 100%, Mouse: 100%, Rat: 100%, Zebrafish: 93%
Characteristics:	This is a rabbit polyclonal antibody against Cyc1. It was validated on Western Blot.
Purification:	Affinity Purified

Target Details

Target:	Cytochrome C1 (CYC1)
Alternative Name:	Cyc1 (CYC1 Products)
Background:	The function of this protein is unknown.

Target Details

	Alias Symbols: 2610002H19Rik, AA408921 Protein Interaction Partner: SNCA, Protein Size: 325
Molecular Weight:	36 kDa
Gene ID:	66445
NCBI Accession:	NM_025567 , NP_079843
UniProt:	Q9D0M3

Application Details

Application Notes:	Optimal working dilutions should be determined experimentally by the investigator.
Comment:	Antigen size: 325 AA
Restrictions:	For Research Use only

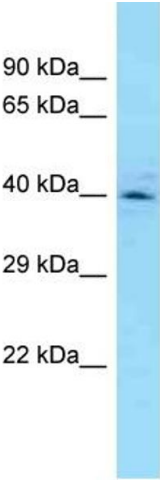
Handling

Format:	Liquid
Concentration:	Lot specific
Buffer:	Liquid. Purified antibody supplied in 1x PBS buffer with 0.09 % (w/v) sodium azide and 2 % sucrose.
Preservative:	Sodium azide
Precaution of Use:	This product contains Sodium azide: a POISONOUS AND HAZARDOUS SUBSTANCE which should be handled by trained staff only.
Handling Advice:	Avoid repeated freeze-thaw cycles.
Storage:	-20 °C
Storage Comment:	For short term use, store at 2-8°C up to 1 week. For long term storage, store at -20°C in small aliquots to prevent freeze-thaw cycles.

Publications

Product cited in:	Qattan, Radulovic, Crawford, Godovac-Zimmermann: "Spatial distribution of cellular function: the partitioning of proteins between mitochondria and the nucleus in MCF7 breast cancer cells." in: Journal of proteome research , Vol. 11, Issue 12, pp. 6080-101, (2012) (PubMed).
-------------------	--

Images



Rabbit Anti-Cyc1 Antibody
Catalog Number: ARP51993
Lot Number: QC26926
Lane: Mouse Liver Lysate

Antibody Titration: 1.0µg/ml
Gel Concentration: 12%

Western Blotting
Image 1.