

Datasheet for ABIN2784732
anti-CELA1 antibody (N-Term)[Go to Product page](#)

1 Image

Overview

Quantity:	100 µL
Target:	CELA1
Binding Specificity:	N-Term
Reactivity:	Human, Mouse, Rat, Cow, Rabbit, Dog, Horse, Guinea Pig
Host:	Rabbit
Clonality:	Polyclonal
Conjugate:	This CELA1 antibody is un-conjugated
Application:	Western Blotting (WB)

Product Details

Immunogen:	The immunogen is a synthetic peptide directed towards the N terminal region of human ELA1
Sequence:	LVLYGHSTQD LPETNARVVG GTEAGRNSWP SQISLQYRSG GSRYHTCGGT
Predicted Reactivity:	Cow: 93%, Dog: 93%, Guinea Pig: 93%, Horse: 92%, Human: 100%, Mouse: 77%, Rabbit: 93%, Rat: 93%
Characteristics:	This is a rabbit polyclonal antibody against ELA1. It was validated on Western Blot using a cell lysate as a positive control.
Purification:	Affinity Purified

Target Details

Target:	CELA1
---------	-------

Target Details

Alternative Name: ELA1 ([CELA1 Products](#))

Background: Elastases form a subfamily of serine proteases that hydrolyze many proteins in addition to elastin. Humans have six structurally similar proteins elastase 1, 2, 2A, 2B, 3A, and 3B. Unlike other elastases, pancreatic elastase 1 is not expressed in the pancreas. To date, elastase 1 (ELA1) expression has only been detected in skin keratinocytes. Clinical literature that describes human elastase 1 activity in the pancreas is actually referring to elastase 2A. Elastases form a subfamily of serine proteases that hydrolyze many proteins in addition to elastin. Humans have six elastase genes which encode the structurally similar proteins elastase 1, 2, 2A, 2B, 3A, and 3B. Unlike other elastases, pancreatic elastase 1 is not expressed in the pancreas. To date, elastase 1 expression has only been detected in skin keratinocytes. Clinical literature that describes human elastase 1 activity in the pancreas is actually referring to elastase 2A.

Publication Note: This RefSeq record includes a subset of the publications that are available for this gene. Please see the Entrez Gene record to access additional publications.

PRIMARYREFSEQ_SPAN PRIMARY_IDENTIFIER PRIMARY_SPAN COMP 1-867 BC069454.1 1-867 868-952 AF120493.1 868-952

Alias Symbols: ELA1

Protein Interaction Partner: PI3, SERPINA1, LPA,

Protein Size: 258

Molecular Weight: 28 kDa

Gene ID: 1990

NCBI Accession: [NM_001971](#), [NP_001962](#)

UniProt: [Q9UNI1](#)

Application Details

Application Notes: Optimal working dilutions should be determined experimentally by the investigator.

Comment: Antigen size: 258 AA

Restrictions: For Research Use only

Handling

Format: Liquid

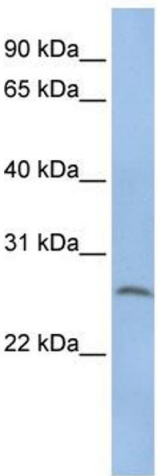
Concentration: Lot specific

Buffer: Liquid. Purified antibody supplied in 1x PBS buffer with 0.09 % (w/v) sodium azide and 2 %

Handling

	sucrose.
Preservative:	Sodium azide
Precaution of Use:	This product contains Sodium azide: a POISONOUS AND HAZARDOUS SUBSTANCE which should be handled by trained staff only.
Handling Advice:	Avoid repeated freeze-thaw cycles.
Storage:	-20 °C
Storage Comment:	For short term use, store at 2-8°C up to 1 week. For long term storage, store at -20°C in small aliquots to prevent freeze-thaw cycles.

Images



Western Blotting

Image 1. WB Suggested Anti-ELA1 Antibody Titration: 0.2-1 ug/ml

ELISA Titer: 1:2500

Positive Control: HepG2 cell lysate