

Datasheet for ABIN2784733
anti-CELA1 antibody (Middle Region)



[Go to Product page](#)

1 Image

Overview

Quantity:	100 µL
Target:	CELA1
Binding Specificity:	Middle Region
Reactivity:	Human, Mouse, Pig, Rat, Cow, Rabbit, Dog, Horse
Host:	Rabbit
Clonality:	Polyclonal
Conjugate:	This CELA1 antibody is un-conjugated
Application:	Western Blotting (WB)

Product Details

Immunogen:	The immunogen is a synthetic peptide corresponding to a region of Mouse
Sequence:	RVVVGEHNLS QNDGTEQYVN VQKIVSHPYW NKNNVVAGYD IALLRLAKSV
Predicted Reactivity:	Cow: 100%, Dog: 92%, Horse: 85%, Human: 100%, Mouse: 92%, Pig: 85%, Rabbit: 86%, Rat: 100%
Characteristics:	This is a rabbit polyclonal antibody against Ela1. It was validated on Western Blot.
Purification:	Affinity Purified

Target Details

Target:	CELA1
Alternative Name:	Ela1 (CELA1 Products)
Background:	The function remains unknown.

Target Details

Alias Symbols: 1810009A17Rik, 1810062B19Rik, Ela-1, Ela1, PC-TsF

Protein Interaction Partner: Serpina1a, Serpinb1a,

Protein Size: 266

Molecular Weight: 29 kDa

Gene ID: 109901

NCBI Accession: [NM_033612](#), [NP_291090](#)

UniProt: [Q91X79](#)

Application Details

Application Notes: Optimal working dilutions should be determined experimentally by the investigator.

Comment: Antigen size: 266 AA

Restrictions: For Research Use only

Handling

Format: Liquid

Concentration: Lot specific

Buffer: Liquid. Purified antibody supplied in 1x PBS buffer with 0.09 % (w/v) sodium azide and 2 % sucrose.

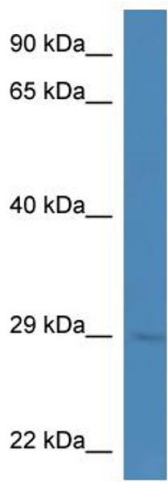
Preservative: Sodium azide

Precaution of Use: This product contains Sodium azide: a POISONOUS AND HAZARDOUS SUBSTANCE which should be handled by trained staff only.

Handling Advice: Avoid repeated freeze-thaw cycles.

Storage: -20 °C

Storage Comment: For short term use, store at 2-8°C up to 1 week. For long term storage, store at -20°C in small aliquots to prevent freeze-thaw cycles.



Rabbit Anti-Ela1 Antibody
Catalog Number: ARP52008
Lot Number: QC28793
Lane: Mouse Kidney Lysate

Antibody Titration: 1.0µg/ml
Gel Concentration: 12%

Western Blotting

Image 1.