



[Go to Product page](#)

Datasheet for ABIN2784736
anti-CLK1 antibody (N-Term)

3 Images

2 Publications

Overview

Quantity:	100 µL
Target:	CLK1
Binding Specificity:	N-Term
Reactivity:	Human, Mouse, Horse, Rabbit, Rat, Cow, Dog, Guinea Pig
Host:	Rabbit
Clonality:	Polyclonal
Application:	Western Blotting (WB)

Product Details

Immunogen:	The immunogen is a synthetic peptide directed towards the N terminal region of human CLK1
Sequence:	HSSAQENKRC KYNHSMCDS HYLESRSINE KDYHSRRYID EYRNDYTQGC
Predicted Reactivity:	Cow: 100%, Dog: 100%, Guinea Pig: 100%, Horse: 100%, Human: 100%, Mouse: 86%, Rabbit: 100%, Rat: 85%
Characteristics:	This is a rabbit polyclonal antibody against CLK1. It was validated on Western Blot.
Purification:	Affinity Purified

Target Details

Target:	CLK1
Alternative Name:	CLK1 (CLK1 Products)
Background:	This gene encodes a member of the CDC2-like (or LAMMER) family of dual specificity protein

Target Details

kinases. In the nucleus, the encoded protein phosphorylates serine/arginine-rich proteins involved in pre-mRNA processing, releasing them into the nucleoplasm. The choice of splice sites during pre-mRNA processing may be regulated by the concentration of transacting factors, including serine/arginine rich proteins. Therefore, the encoded protein may play an indirect role in governing splice site selection. Multiple transcript variants encoding different isoforms have been found for this gene.

Alias Symbols: CLK, CLK/STY, STY

Protein Interaction Partner: KRTAP10-7, PDE9A, PRMT5, SRPK2, SRPK1, CLK1, BAG3, PIAS4, ISG15, UBC, YWHAG, LUC7L3, PPIG, SRSF6, PRPF4, GOLM1, UBL5, SRSF1, PTPN1, MBP, BCLAF1, NCOR1, SRSF3, SAFB,

Protein Size: 484

Molecular Weight: 57 kDa

Gene ID: 1195

NCBI Accession: [NM_004071](#), [NP_004062](#)

UniProt: [P49759](#)

Application Details

Application Notes: Optimal working dilutions should be determined experimentally by the investigator.

Comment: Antigen size: 484 AA

Restrictions: For Research Use only

Handling

Format: Liquid

Concentration: Lot specific

Buffer: Liquid. Purified antibody supplied in 1x PBS buffer with 0.09 % (w/v) sodium azide and 2 % sucrose.

Preservative: Sodium azide

Precaution of Use: This product contains Sodium azide: a POISONOUS AND HAZARDOUS SUBSTANCE which should be handled by trained staff only.

Handling Advice: Avoid repeated freeze-thaw cycles.

Storage: -20 °C

Handling

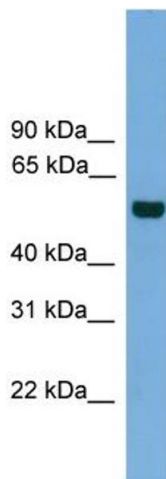
Storage Comment: For short term use, store at 2-8°C up to 1 week. For long term storage, store at -20°C in small aliquots to prevent freeze-thaw cycles.

Publications

Product cited in: Aubol, Wu, Keshwani, Movassat, Fattet, Hertel, Fu, Adams: "Release of SR Proteins from CLK1 by SRPK1: A Symbiotic Kinase System for Phosphorylation Control of Pre-mRNA Splicing." in: **Molecular cell**, Vol. 63, Issue 2, pp. 218-228, (2016) ([PubMed](#)).

Eisenreich, Zakrzewicz, Huber, Thierbach, Pepke, Goldin-Lang, Schultheiss, Pries, Rauch: "Regulation of pro-angiogenic tissue factor expression in hypoxia-induced human lung cancer cells." in: **Oncology reports**, Vol. 30, Issue 1, pp. 462-70, (2013) ([PubMed](#)).

Images



CLK1



See Immunoblot 2 Data for more information.

Western Blotting

Image 1. WB Suggested Anti-CLK1 Antibody Titration: 0.2-1 ug/ml

ELISA Titer: 1:312500

Positive Control: 293T cell lysate

Western Blotting

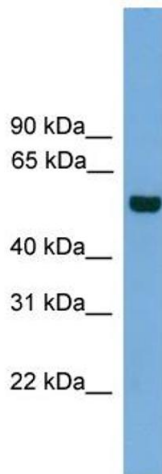
Image 2. Sample type: human microvascular endothelial cells (25ug)

Primary Dilution: 1:1000

Secondary Antibody: Goat anti-Rabbit-HRP

Secondary Dilution: 1:5000

Image Submitted by: Andreas Eisenreich
Charite Universitätsmedizin Berlin



Western Blotting

Image 3. WB Suggested Anti-CLK1

Antibody Titration: 0.2-1 µg/mL ELISA Titer: 1:12500

Positive Control: 93T cell lysate

CLK1 is supported by BioGPS gene expression data to be expressed in HEK293T