

Datasheet for ABIN2784738
anti-CRYBB3 antibody (Middle Region)[Go to Product page](#)

2 Images

Overview

Quantity:	100 µL
Target:	CRYBB3 (CRYbB3)
Binding Specificity:	Middle Region
Reactivity:	Human, Mouse, Rat, Dog, Guinea Pig, Horse, Rabbit, Zebrafish (Danio rerio), Cow, Pig, Sheep
Host:	Rabbit
Clonality:	Polyclonal
Conjugate:	This CRYBB3 antibody is un-conjugated
Application:	Western Blotting (WB)

Product Details

Immunogen:	The immunogen is a synthetic peptide directed towards the middle region of human CRYBB3
Sequence:	LNIDSPHHKL HLFENPAFSG RKMEIVDDDV PSLWAHGFQD RVASVRAING
Predicted Reactivity:	Cow: 93%, Dog: 100%, Guinea Pig: 79%, Horse: 100%, Human: 100%, Mouse: 100%, Pig: 93%, Rabbit: 100%, Rat: 100%, Sheep: 93%, Zebrafish: 79%
Characteristics:	This is a rabbit polyclonal antibody against CRYBB3. It was validated on Western Blot using a cell lysate as a positive control.
Purification:	Affinity Purified

Target Details

Target:	CRYBB3 (CRYbB3)
---------	-----------------

Target Details

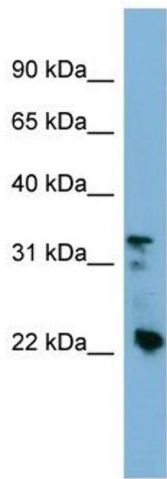
Alternative Name:	CRYBB3 (CRYbB3 Products)
Background:	<p>Crystallins are separated into two classes: taxon-specific, or enzyme, and ubiquitous. The latter class constitutes the major proteins of vertebrate eye lens and maintains the transparency and refractive index of the lens. Since lens central fiber cells l</p> <p>Alias Symbols: CATCN2, CRYB3, MGC125772, MGC125773, MGC125774</p> <p>Protein Interaction Partner: CRYBA1, SRRM1,</p> <p>Protein Size: 211</p>
Molecular Weight:	24 kDa
Gene ID:	1417
NCBI Accession:	NM_004076 , NP_004067
UniProt:	P26998

Application Details

Application Notes:	Optimal working dilutions should be determined experimentally by the investigator.
Comment:	Antigen size: 211 AA
Restrictions:	For Research Use only

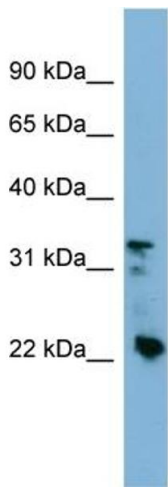
Handling

Format:	Liquid
Concentration:	Lot specific
Buffer:	Liquid. Purified antibody supplied in 1x PBS buffer with 0.09 % (w/v) sodium azide and 2 % sucrose.
Preservative:	Sodium azide
Precaution of Use:	This product contains Sodium azide: a POISONOUS AND HAZARDOUS SUBSTANCE which should be handled by trained staff only.
Handling Advice:	Avoid repeated freeze-thaw cycles.
Storage:	-20 °C
Storage Comment:	For short term use, store at 2-8°C up to 1 week. For long term storage, store at -20°C in small aliquots to prevent freeze-thaw cycles.



Western Blotting

Image 1. WB Suggested Anti-CRYBB3 Antibody Titration:
0.2-1 ug/ml
ELISA Titer: 1:12500
Positive Control: HT1080 cell lysate



Rabbit Anti-CRYBB3 Antibody
Catalog Number: ARP52026
Lot Number: QC23453
Lane: HT1080 Cell Lysate

Antibody Titration: 1.0µg/ml
Gel Concentration: 12%

Western Blotting

Image 2. WB Suggested Anti-CRYBB3
Antibody Titration: 0.2-1 µg/mL ELISA Titer: 1:12500
Positive Control: HT1080 cell lysate