

Datasheet for ABIN2784758  
**anti-INSL5 antibody (Middle Region)**[Go to Product page](#)

## 2 Images

## Overview

Quantity:	100 µL
Target:	INSL5
Binding Specificity:	Middle Region
Reactivity:	Human, Rabbit
Host:	Rabbit
Clonality:	Polyclonal
Conjugate:	This INSL5 antibody is un-conjugated
Application:	Western Blotting (WB)

## Product Details

Immunogen:	The immunogen is a synthetic peptide directed towards the middle region of human INSL5
Sequence:	RTVIYICASS RWRRHQEGIP QAQQAETGNS FQLPHKREFS EENPAQNLPK
Predicted Reactivity:	Human: 100%, Rabbit: 79%
Characteristics:	This is a rabbit polyclonal antibody against INSL5. It was validated on Western Blot using a cell lysate as a positive control.
Purification:	Affinity Purified

## Target Details

Target:	INSL5
Alternative Name:	INSL5 ( <a href="#">INSL5 Products</a> )

## Target Details

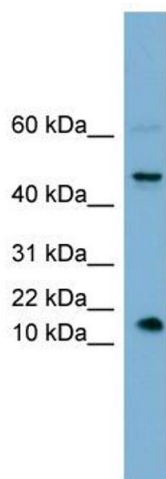
Background:	The protein encoded by this gene contains a classical signature of the insulin superfamily and is highly similar to relaxin 3 (RLN3/INSL7). Alias Symbols: MGC126695, MGC126697, PRO182, UNQ156 Protein Size: 135
Molecular Weight:	13 kDa
Gene ID:	10022
NCBI Accession:	<a href="#">NM_005478</a> , <a href="#">NP_005469</a>
UniProt:	<a href="#">Q9Y5Q6</a>
Pathways:	<a href="#">Hormone Activity</a>

## Application Details

Application Notes:	Optimal working dilutions should be determined experimentally by the investigator.
Comment:	Antigen size: 135 AA
Restrictions:	For Research Use only

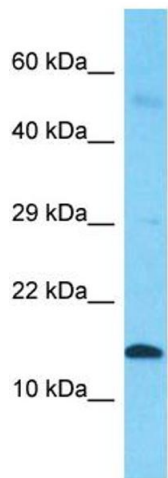
## Handling

Format:	Liquid
Concentration:	Lot specific
Buffer:	Liquid. Purified antibody supplied in 1x PBS buffer with 0.09 % (w/v) sodium azide and 2 % sucrose.
Preservative:	Sodium azide
Precaution of Use:	This product contains Sodium azide: a POISONOUS AND HAZARDOUS SUBSTANCE which should be handled by trained staff only.
Handling Advice:	Avoid repeated freeze-thaw cycles.
Storage:	-20 °C
Storage Comment:	For short term use, store at 2-8°C up to 1 week. For long term storage, store at -20°C in small aliquots to prevent freeze-thaw cycles.



**Western Blotting**

**Image 1. WB Suggested Anti-INSL5 Antibody Titration:**  
0.2-1 ug/ml  
**ELISA Titer:** 1:312500  
**Positive Control:** Hela cell lysate



Host: Rabbit  
Target Name: INSL5  
Sample Tissue: Fetal Lung Lysate  
Antibody Dilution: 1.0µg/ml

**Western Blotting**

**Image 2.** Host: Rabbit  
Target Name: INSL5  
Sample Tissue: Fetal Lung lysates  
Antibody Dilution: 1.0 µg/mL