

Datasheet for ABIN2784759  
**anti-TOM1 antibody (Middle Region)**[Go to Product page](#)

## 1 Image

## Overview

Quantity:	100 µL
Target:	TOM1
Binding Specificity:	Middle Region
Reactivity:	Human, Mouse, Rat, Dog, Horse, Cow, Rabbit, Guinea Pig
Host:	Rabbit
Clonality:	Polyclonal
Conjugate:	This TOM1 antibody is un-conjugated
Application:	Western Blotting (WB)

## Product Details

Immunogen:	The immunogen is a synthetic peptide directed towards the middle region of human TOM1
Sequence:	SGRLEDEFDM FALTRGSSLA DQRKEVKYEA PQATDGLAGA LDARQQSTGA
Predicted Reactivity:	Cow: 100%, Dog: 100%, Guinea Pig: 100%, Horse: 100%, Human: 100%, Mouse: 100%, Rabbit: 100%, Rat: 100%
Characteristics:	This is a rabbit polyclonal antibody against TOM1. It was validated on Western Blot using a cell lysate as a positive control.
Purification:	Affinity Purified

## Target Details

Target:	TOM1
---------	------

## Target Details

Alternative Name:	TOM1 ( <a href="#">TOM1 Products</a> )
Background:	<p>This gene was identified as a target of the v-myb oncogene. The encoded protein shares its N-terminal domain in common with proteins associated with vesicular trafficking at the endosome. It is recruited to the endosomes by its interaction with endofin. Several alternatively spliced transcript variants encoding different isoforms have been found for this gene.</p> <p>Alias Symbols: FLJ33404</p> <p>Protein Interaction Partner: TOLLIP, UBC, WDR12, EXOSC4, YAP1, TBCD, ME1, HIST1H1E, GARS, PARK2, PTBP2, ZNF512B, SSBP2, ILVBL, RPS27, MYO6, VCP, APP, UBE2D1, CLTC, RAC1, TSG101, NEDD4, IL1R1, ZFYVE16, EEA1,</p> <p>Protein Size: 492</p>
Molecular Weight:	54 kDa
Gene ID:	10043
NCBI Accession:	<a href="#">NM_005488</a> , <a href="#">NP_005479</a>
UniProt:	<a href="#">O60784</a>

## Application Details

Application Notes:	Optimal working dilutions should be determined experimentally by the investigator.
Comment:	Antigen size: 492 AA
Restrictions:	For Research Use only

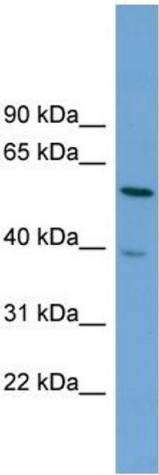
## Handling

Format:	Liquid
Concentration:	Lot specific
Buffer:	Liquid. Purified antibody supplied in 1x PBS buffer with 0.09 % (w/v) sodium azide and 2 % sucrose.
Preservative:	Sodium azide
Precaution of Use:	This product contains Sodium azide: a POISONOUS AND HAZARDOUS SUBSTANCE which should be handled by trained staff only.
Handling Advice:	Avoid repeated freeze-thaw cycles.
Storage:	-20 °C

Handling

Storage Comment: For short term use, store at 2-8°C up to 1 week. For long term storage, store at -20°C in small aliquots to prevent freeze-thaw cycles.

Images



Western Blotting

**Image 1. WB Suggested Anti-TOM1 Antibody Titration:**

0.2-1 ug/ml

**ELISA Titer:** 1:1562500

**Positive Control:** U937 cell lysate