

Datasheet for ABIN2784761
anti-CST8 antibody (Middle Region)



[Go to Product page](#)

1 Image

Overview

Quantity:	100 µL
Target:	CST8
Binding Specificity:	Middle Region
Reactivity:	Human, Mouse, Rat, Horse, Rabbit, Dog, Cow, Pig
Host:	Rabbit
Clonality:	Polyclonal
Application:	Western Blotting (WB)

Product Details

Immunogen:	The immunogen is a synthetic peptide directed towards the middle region of human CST8
Sequence:	LKPVNASNAN VKQCLWFAMQ EYNKESEDKY VFLVVKTLQA QLQVTNLLEY
Predicted Reactivity:	Cow: 90%, Dog: 92%, Horse: 100%, Human: 100%, Mouse: 100%, Pig: 92%, Rabbit: 86%, Rat: 93%
Characteristics:	This is a rabbit polyclonal antibody against CST8. It was validated on Western Blot using a cell lysate as a positive control.
Purification:	Affinity Purified

Target Details

Target:	CST8
Alternative Name:	CST8 (CST8 Products)
Background:	The cystatin superfamily encompasses proteins that contain multiple cystatin-like sequences.

Target Details

Some of the members are active cysteine protease inhibitors, while others have lost or perhaps never acquired this inhibitory activity. There are three inhibitory families in the superfamily, including the type 1 cystatins (stefins), type 2 cystatins and the kininogens. The type 2 cystatin proteins are a class of cysteine proteinase inhibitors found in a variety of human fluids and secretions. The cystatin locus on chromosome 20 contains the majority of the type 2 cystatin genes and pseudogenes. This gene is located in the cystatin locus and encodes a protein similar to type 2 cystatins. The protein exhibits highly tissue-specific expression in the reproductive tract, suggesting implicit roles in reproduction. Alternative splicing identified in mouse is suggested in human based on EST evidence but the full-length nature of putative variants has not been determined.

Alias Symbols: CRES

Protein Size: 142

Molecular Weight:	14 kDa
Gene ID:	10047
NCBI Accession:	NM_005492 , NP_005483
UniProt:	O60676

Application Details

Application Notes:	Optimal working dilutions should be determined experimentally by the investigator.
Comment:	Antigen size: 142 AA
Restrictions:	For Research Use only

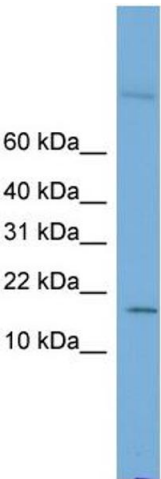
Handling

Format:	Liquid
Concentration:	Lot specific
Buffer:	Liquid. Purified antibody supplied in 1x PBS buffer with 0.09 % (w/v) sodium azide and 2 % sucrose.
Preservative:	Sodium azide
Precaution of Use:	This product contains Sodium azide: a POISONOUS AND HAZARDOUS SUBSTANCE which should be handled by trained staff only.
Handling Advice:	Avoid repeated freeze-thaw cycles.

Handling

Storage:	-20 °C
Storage Comment:	For short term use, store at 2-8°C up to 1 week. For long term storage, store at -20°C in small aliquots to prevent freeze-thaw cycles.

Images



Western Blotting

Image 1. WB Suggested Anti-CST8 Antibody Titration: 0.2-1 ug/ml ELISA Titer: 1:1562500 Positive Control: THP-1 cell lysate