



Datasheet for ABIN2784762
anti-AP1m2 antibody (N-Term)



[Go to Product page](#)

2 Images

Overview

Quantity:	100 µL
Target:	AP1m2
Binding Specificity:	N-Term
Reactivity:	Human, Mouse, Rat, Cow, Dog, Guinea Pig, Horse, Zebrafish (Danio rerio), Rabbit, Saccharomyces cerevisiae
Host:	Rabbit
Clonality:	Polyclonal
Application:	Western Blotting (WB)

Product Details

Immunogen:	The immunogen is a synthetic peptide directed towards the N terminal region of human AP1M2
Sequence:	MSASAVFILD VKGKPLISRN YKGDVAMSKI EHFMPLLVQR EEGALAPLL
Predicted Reactivity:	Cow: 100%, Dog: 100%, Guinea Pig: 100%, Horse: 100%, Human: 100%, Mouse: 100%, Rabbit: 79%, Rat: 100%, Yeast: 83%, Zebrafish: 86%
Characteristics:	This is a rabbit polyclonal antibody against AP1M2. It was validated on Western Blot.
Purification:	Affinity Purified

Target Details

Target:	AP1m2
Alternative Name:	AP1M2 (AP1m2 Products)

Target Details

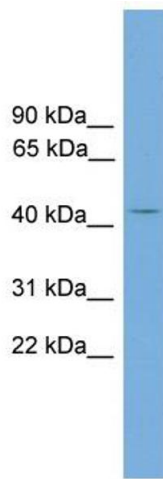
Background:	<p>This gene encodes a subunit of the heterotetrameric adaptor-related protein complex 1 (AP-1), which belongs to the adaptor complexes medium subunits family. This protein is capable of interacting with tyrosine-based sorting signals.</p> <p>Alias Symbols: HSMU1B, MU-1B, MU1B, mu2, AP1-mu2</p> <p>Protein Interaction Partner: AP2B1, EGFR, UBC, ECSIT, MAST1, RAB3D, RAB3A, PSEN1, BLMH, APP, A2M, LOXL4, NDRG1, EPN1, SCNN1B, SCNN1A, SCNN1G, LDLR, AP1M1, AP1G1, AP1S1, TGOLN2, GAK, AP1B1, PVR, EHD2,</p> <p>Protein Size: 423</p>
Molecular Weight:	48 kDa
Gene ID:	10053
NCBI Accession:	NM_005498 , NP_005489
UniProt:	Q9Y6Q5

Application Details

Application Notes:	Optimal working dilutions should be determined experimentally by the investigator.
Comment:	Antigen size: 423 AA
Restrictions:	For Research Use only

Handling

Format:	Liquid
Concentration:	Lot specific
Buffer:	Liquid. Purified antibody supplied in 1x PBS buffer with 0.09 % (w/v) sodium azide and 2 % sucrose.
Preservative:	Sodium azide
Precaution of Use:	This product contains Sodium azide: a POISONOUS AND HAZARDOUS SUBSTANCE which should be handled by trained staff only.
Handling Advice:	Avoid repeated freeze-thaw cycles.
Storage:	-20 °C
Storage Comment:	For short term use, store at 2-8°C up to 1 week. For long term storage, store at -20°C in small aliquots to prevent freeze-thaw cycles.

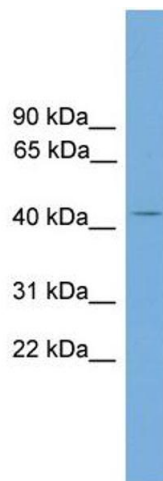


Western Blotting

Image 1. WB Suggested Anti-AP1M2 Antibody Titration:

0.2-1 ug/ml

Positive Control: 721_B cell lysate



Western Blotting

Image 2. WB Suggested Anti-AP1M2

Antibody Titration: 0.2-1 µg/mL

Positive Control: 21_B cell lysate

AP1M2 is strongly supported by BioGPS gene expression data to be expressed in Human 721_B cells