

Datasheet for ABIN2784764
anti-SAE1 antibody (N-Term)



[Go to Product page](#)

2 Images

Overview

Quantity:	100 µL
Target:	SAE1
Binding Specificity:	N-Term
Reactivity:	Human, Mouse, Rat, Cow, Dog, Rabbit, Guinea Pig, Horse, Pig
Host:	Rabbit
Clonality:	Polyclonal
Conjugate:	This SAE1 antibody is un-conjugated
Application:	Western Blotting (WB)

Product Details

Immunogen:	The immunogen is a synthetic peptide directed towards the N terminal region of human SAE1
Sequence:	VTPEDPGAQF LIRTGSVGRN RAEASLERAQ NLNPMVDVKV DTEDIEKKPE
Predicted Reactivity:	Cow: 100%, Dog: 100%, Guinea Pig: 93%, Horse: 100%, Human: 100%, Mouse: 100%, Pig: 100%, Rabbit: 100%, Rat: 93%
Characteristics:	This is a rabbit polyclonal antibody against SAE1. It was validated on Western Blot using a cell lysate as a positive control.
Purification:	Affinity Purified

Target Details

Target:	SAE1
---------	------

Target Details

Alternative Name:	SAE1 (SAE1 Products)
Background:	<p>Posttranslational modification of proteins by the addition of the small protein SUMO (see SUMO1, MIM 601912), or sumoylation, regulates protein structure and intracellular localization. SAE1 and UBA2 (MIM 613295) form a heterodimer that functions as a SUMO-activating enzyme for the sumoylation of proteins (Okuma et al., 1999 [PubMed 9920803]).</p> <p>Alias Symbols: AOS1, FLJ3091, HSPC140, SUA1, UBLE1A</p> <p>Protein Interaction Partner: FUS, USP39, SUMO2, HSPA2, HSPA1A, UBC, TRMT10A, DPP9, RPRD1B, NPLOC4, OSGEP, PANK4, WDR4, CUL5, TPD52L2, SRP14, RANGAP1, PPP2R5E, MCM3, LPP, DHPS, CALU, ADSL, AARS, PDE12, TP53RK, UBE2I, UBA2, BAG3, PTK2, IL3RA, APP, SUMO1, ETV4, BCL6, UBE2E3, SUMO3, SP10</p> <p>Protein Size: 346</p>
Molecular Weight:	38 kDa
Gene ID:	10055
NCBI Accession:	NM_005500 , NP_005491
UniProt:	Q9UBE0

Application Details

Application Notes:	Optimal working dilutions should be determined experimentally by the investigator.
Comment:	Antigen size: 346 AA
Restrictions:	For Research Use only

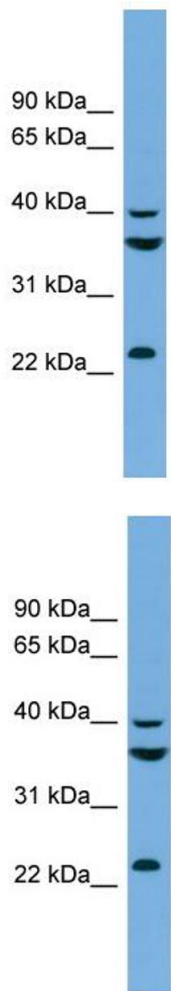
Handling

Format:	Liquid
Concentration:	Lot specific
Buffer:	Liquid. Purified antibody supplied in 1x PBS buffer with 0.09 % (w/v) sodium azide and 2 % sucrose.
Preservative:	Sodium azide
Precaution of Use:	This product contains Sodium azide: a POISONOUS AND HAZARDOUS SUBSTANCE which should be handled by trained staff only.
Handling Advice:	Avoid repeated freeze-thaw cycles.

Handling

Storage:	-20 °C
Storage Comment:	For short term use, store at 2-8°C up to 1 week. For long term storage, store at -20°C in small aliquots to prevent freeze-thaw cycles.

Images



Western Blotting

Image 1. WB Suggested Anti-SAE1 Antibody Titration: 0.2-1 ug/ml

ELISA Titer: 1:1562500

Positive Control: Hela cell lysate

Western Blotting

Image 2. WB Suggested Anti-SAE1

Antibody Titration: 0.2-1 µg/mL ELISA Titer: 1:1562500

Positive Control: Hela cell lysate

SAE1 is supported by BioGPS gene expression data to be expressed in HeLa