



[Go to Product page](#)

Datasheet for ABIN2784767
anti-EDIL3 antibody (N-Term)

2 Images

Overview

Quantity:	100 µL
Target:	EDIL3 (DEL1)
Binding Specificity:	N-Term
Reactivity:	Human, Mouse, Rat, Rabbit, Zebrafish (Danio rerio), Cow, Dog, Guinea Pig, Horse
Host:	Rabbit
Clonality:	Polyclonal
Conjugate:	This EDIL3 antibody is un-conjugated
Application:	Western Blotting (WB)

Product Details

Immunogen:	The immunogen is a synthetic peptide directed towards the N terminal region of human EDIL3
Sequence:	EPTSAGPCTP NPCHNGGTCE ISEAYRGDTF IGYVCKCPRG FNGIHCQHNI
Predicted Reactivity:	Cow: 100%, Dog: 100%, Guinea Pig: 100%, Horse: 93%, Human: 100%, Mouse: 100%, Rabbit: 100%, Rat: 100%, Zebrafish: 86%
Characteristics:	This is a rabbit polyclonal antibody against EDIL3. It was validated on Western Blot.
Purification:	Affinity Purified

Target Details

Target:	EDIL3 (DEL1)
Alternative Name:	EDIL3 (DEL1 Products)

Target Details

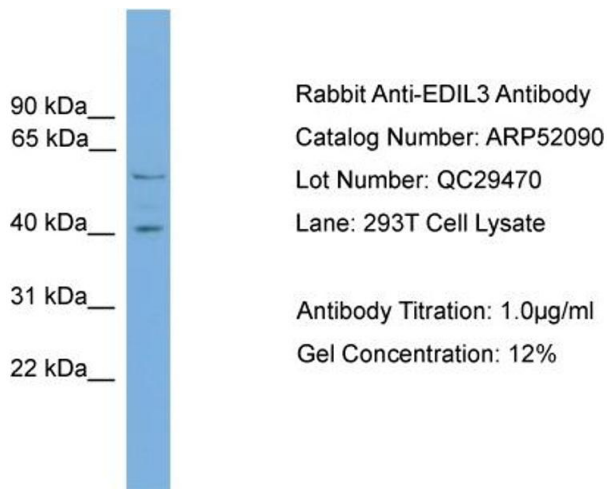
Background:	<p>The protein encoded by this gene is an integrin ligand. It plays an important role in mediating angiogenesis and may be important in vessel wall remodeling and development. It also influences endothelial cell behavior.</p> <p>Alias Symbols: DEL1, MGC26287</p> <p>Protein Interaction Partner: CDKL1, UBC, Pafah1b1, ITGAV,</p> <p>Protein Size: 480</p>
Molecular Weight:	54 kDa
Gene ID:	10085
NCBI Accession:	NM_005711 , NP_005702
UniProt:	O43854

Application Details

Application Notes:	Optimal working dilutions should be determined experimentally by the investigator.
Comment:	Antigen size: 480 AA
Restrictions:	For Research Use only

Handling

Format:	Liquid
Concentration:	Lot specific
Buffer:	Liquid. Purified antibody supplied in 1x PBS buffer with 0.09 % (w/v) sodium azide and 2 % sucrose.
Preservative:	Sodium azide
Precaution of Use:	This product contains Sodium azide: a POISONOUS AND HAZARDOUS SUBSTANCE which should be handled by trained staff only.
Handling Advice:	Avoid repeated freeze-thaw cycles.
Storage:	-20 °C
Storage Comment:	For short term use, store at 2-8°C up to 1 week. For long term storage, store at -20°C in small aliquots to prevent freeze-thaw cycles.

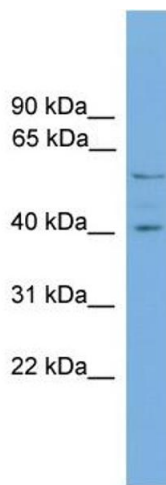


Western Blotting

Image 1. WB Suggested Anti-EDIL3

Antibody Titration: 0.2-1 µg/mL

Positive Control: 93T cell lysate



Western Blotting

Image 2. WB Suggested Anti-EDIL3 Antibody Titration:

0.2-1 ug/ml

Positive Control: 293T cell lysate