

Datasheet for ABIN2784790

anti-CORO2B antibody (N-Term)[Go to Product page](#)**1** Image

Overview

Quantity:	100 µL
Target:	CORO2B
Binding Specificity:	N-Term
Reactivity:	Human, Mouse, Rat, Horse, Rabbit, Cow, Guinea Pig, Dog
Host:	Rabbit
Clonality:	Polyclonal
Conjugate:	This CORO2B antibody is un-conjugated
Application:	Western Blotting (WB)

Product Details

Immunogen:	The immunogen is a synthetic peptide directed towards the N-terminal region of Mouse Coro2b
Sequence:	GGSFVLIPLE QTGRIEPNYP KVCGHQGNVL DIKWNPFDN IIASCS EDTS
Predicted Reactivity:	Cow: 100%, Dog: 100%, Guinea Pig: 100%, Horse: 100%, Human: 100%, Mouse: 100%, Rabbit: 100%, Rat: 100%
Characteristics:	This is a rabbit polyclonal antibody against Coro2b. It was validated on Western Blot.
Purification:	Affinity Purified

Target Details

Target:	CORO2B
Alternative Name:	Coro2b (CORO2B Products)

Target Details

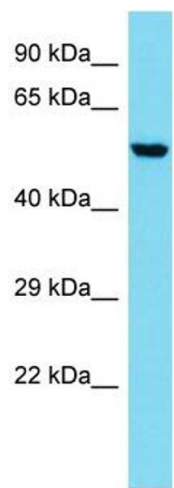
Background:	The function of this protein remains unknown. Alias Symbols: CLIPINC, E130012P22Rik Protein Size: 475
Molecular Weight:	52 kDa
Gene ID:	235431
NCBI Accession:	NM_175484 , NP_780693

Application Details

Application Notes:	Optimal working dilutions should be determined experimentally by the investigator.
Comment:	Antigen size: 475 AA
Restrictions:	For Research Use only

Handling

Format:	Liquid
Concentration:	Lot specific
Buffer:	Liquid. Purified antibody supplied in 1x PBS buffer with 0.09 % (w/v) sodium azide and 2 % sucrose.
Preservative:	Sodium azide
Precaution of Use:	This product contains Sodium azide: a POISONOUS AND HAZARDOUS SUBSTANCE which should be handled by trained staff only.
Handling Advice:	Avoid repeated freeze-thaw cycles.
Storage:	-20 °C
Storage Comment:	For short term use, store at 2-8°C up to 1 week. For long term storage, store at -20°C in small aliquots to prevent freeze-thaw cycles.



Western Blotting
Image 1. Host: Rabbit
Target Name: Coro2b
Sample Tissue: Mouse Lung lysates
Antibody Dilution: 1.0 µg/mL