



[Go to Product page](#)

Datasheet for ABIN2784794

anti-RAPGEF3 antibody (Middle Region)

2 Images

Overview

Quantity:	100 µL
Target:	RAPGEF3
Binding Specificity:	Middle Region
Reactivity:	Human, Mouse, Rat, Horse, Cow, Dog, Rabbit, Guinea Pig, Pig
Host:	Rabbit
Clonality:	Polyclonal
Conjugate:	This RAPGEF3 antibody is un-conjugated
Application:	Western Blotting (WB)

Product Details

Immunogen:	The immunogen is a synthetic peptide directed towards the middle region of human RAPGEF3
Sequence:	HGKVVLVLER ASQGAGPSRP PTPGRNRYTV MSGTPEKILE LLEAMGPDS
Predicted Reactivity:	Cow: 93%, Dog: 100%, Guinea Pig: 92%, Horse: 100%, Human: 100%, Mouse: 100%, Pig: 93%, Rabbit: 85%, Rat: 100%
Characteristics:	This is a rabbit polyclonal antibody against RAPGEF3. It was validated on Western Blot.
Purification:	Affinity Purified

Target Details

Target:	RAPGEF3
Alternative Name:	RAPGEF3 (RAPGEF3 Products)

Target Details

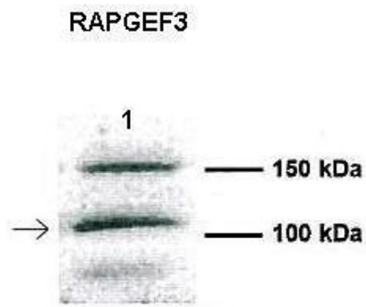
Background:	The function of the protein remains unknown. Alias Symbols: CAMP-GEFI, EPAC, EPAC1, MGC21410, bcm910, HSU79275 Protein Interaction Partner: PNMA1, AP2B1, NUP205, RAPGEF3, RANBP2, RAN, NUP98, KPNB1, MAP1A, RRAS2, RAP2A, RAP1A, Protein Size: 923
Molecular Weight:	104 kDa
Gene ID:	10411
NCBI Accession:	NM_001098531 , NP_001092001
UniProt:	O95398
Pathways:	cAMP Metabolic Process

Application Details

Application Notes:	Optimal working dilutions should be determined experimentally by the investigator.
Comment:	Antigen size: 923 AA
Restrictions:	For Research Use only

Handling

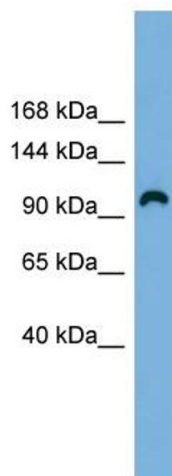
Format:	Liquid
Concentration:	Lot specific
Buffer:	Liquid. Purified antibody supplied in 1x PBS buffer with 0.09 % (w/v) sodium azide and 2 % sucrose.
Preservative:	Sodium azide
Precaution of Use:	This product contains Sodium azide: a POISONOUS AND HAZARDOUS SUBSTANCE which should be handled by trained staff only.
Handling Advice:	Avoid repeated freeze-thaw cycles.
Storage:	-20 °C
Storage Comment:	For short term use, store at 2-8°C up to 1 week. For long term storage, store at -20°C in small aliquots to prevent freeze-thaw cycles.



Western Blotting

Image 1. Human CFBE

See Immunoblot 2 Data and customer Feedback for more Information



Western Blotting

Image 2. WB Suggested Anti-RAPGEF3 Antibody Titration:
0.2-1 ug/ml ELISA Titer: 1:1562500 Positive Control: HCT15
cell lysate