

Datasheet for ABIN2784801
anti-PPIH antibody (N-Term)



[Go to Product page](#)

1 Image

Overview

Quantity:	100 µL
Target:	PPIH
Binding Specificity:	N-Term
Reactivity:	Human, Mouse, Rat, Guinea Pig, Zebrafish (Danio rerio), Horse, Rabbit, Cow, Dog, Saccharomyces cerevisiae
Host:	Rabbit
Clonality:	Polyclonal
Conjugate:	This PPIH antibody is un-conjugated
Application:	Western Blotting (WB)

Product Details

Immunogen:	The immunogen is a synthetic peptide directed towards the N terminal region of human PPIH
Sequence:	VVPKTAENFR QFCTGEFRKD GVPIGYKGST FHRVIKDFMI QGGDFVNGDG
Predicted Reactivity:	Cow: 100%, Dog: 100%, Guinea Pig: 100%, Horse: 100%, Human: 100%, Mouse: 100%, Rabbit: 100%, Rat: 100%, Yeast: 79%, Zebrafish: 86%
Characteristics:	This is a rabbit polyclonal antibody against PPIH. It was validated on Western Blot using a cell lysate as a positive control.
Purification:	Affinity Purified

Target Details

Target:	PPIH
---------	------

Target Details

Alternative Name:	PPIH (PPIH Products)
Background:	<p>The protein encoded by this gene is a member of the peptidyl-prolyl cis-trans isomerase (PPIase) family. PPIases catalyze the cis-trans isomerization of proline imidic peptide bonds in oligopeptides and accelerate the folding of proteins. This protein is a specific component of the complex that includes pre-mRNA processing factors PRPF3, PRPF4, and PRPF18, as well as U4/U5/U6 tri-snRNP. This protein has been shown to possess PPIase activity and may act as a protein chaperone that mediates the interactions between different proteins inside the spliceosome.</p> <p>Alias Symbols: CYP-20, CYPH, MGC5016, SnuCyp-20, USA-CYP</p> <p>Protein Interaction Partner: N4BP2L2, HUWE1, UBC, SOX2, METTL18, BAG2, PRPF4, VCAM1, ITGA4, FN1, PAXIP1, PCMT1, PRPF31, PPIH, PRPF3, NHP2L1, CUL3, Prpf8, MEPCE, USP15, SART3, USP4, PRPF18,</p> <p>Protein Size: 177</p>
Molecular Weight:	19 kDa
Gene ID:	10465
NCBI Accession:	NM_006347 , NP_006338
UniProt:	O43447

Application Details

Application Notes:	Optimal working dilutions should be determined experimentally by the investigator.
Comment:	Antigen size: 177 AA
Restrictions:	For Research Use only

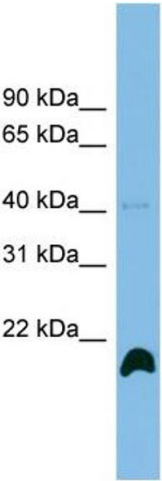
Handling

Format:	Liquid
Concentration:	Lot specific
Buffer:	Liquid. Purified antibody supplied in 1x PBS buffer with 0.09 % (w/v) sodium azide and 2 % sucrose.
Preservative:	Sodium azide
Precaution of Use:	This product contains Sodium azide: a POISONOUS AND HAZARDOUS SUBSTANCE which should be handled by trained staff only.

Handling

Handling Advice:	Avoid repeated freeze-thaw cycles.
Storage:	-20 °C
Storage Comment:	For short term use, store at 2-8°C up to 1 week. For long term storage, store at -20°C in small aliquots to prevent freeze-thaw cycles.

Images



Western Blotting

Image 1. WB Suggested Anti-PPIH Antibody Titration: 0.2-1 ug/ml ELISA Titer: 1:312500 Positive Control: THP-1 cell lysate