



[Go to Product page](#)

Datasheet for ABIN2784802
anti-PPIH antibody (Middle Region)

2 Images

Overview

Quantity:	100 µL
Target:	PPIH
Binding Specificity:	Middle Region
Reactivity:	Human, Mouse, Rat, Guinea Pig, Zebrafish (Danio rerio), Horse, Rabbit, Cow, Dog, Saccharomyces cerevisiae, Goat
Host:	Rabbit
Clonality:	Polyclonal
Conjugate:	This PPIH antibody is un-conjugated
Application:	Western Blotting (WB)

Product Details

Immunogen:	The immunogen is a synthetic peptide directed towards the middle region of human PPIH
Sequence:	DFMIQGGDFV NGDGTGVASI YRGPFADEFN KLRHSAPGLL SMANSGPSTN
Predicted Reactivity:	Cow: 100%, Dog: 100%, Goat: 90%, Guinea Pig: 100%, Horse: 100%, Human: 100%, Mouse: 100%, Rabbit: 100%, Rat: 100%, Yeast: 100%, Zebrafish: 90%
Characteristics:	This is a rabbit polyclonal antibody against PPIH. It was validated on Western Blot using a cell lysate as a positive control.
Purification:	Affinity Purified

Target Details

Target:	PPIH
---------	------

Target Details

Alternative Name: PPIH ([PPIH Products](#))

Background: The protein encoded by this gene is a member of the peptidyl-prolyl cis-trans isomerase (PPIase) family. PPIases catalyze the cis-trans isomerization of proline imidic peptide bonds in oligopeptides and accelerate the folding of proteins. This protein is a specific component of the complex that includes pre-mRNA processing factors PRPF3, PRPF4, and PRPF18, as well as U4/U5/U6 tri-snRNP. This protein has been shown to possess PPIase activity and may act as a protein chaperone that mediates the interactions between different proteins inside the spliceosome.

Alias Symbols: CYP-20, CYPH, MGC5016, SnuCyp-20, USA-CYP

Protein Interaction Partner: N4BP2L2, HUWE1, UBC, SOX2, METTL18, BAG2, PRPF4, VCAM1, ITGA4, FN1, PAXIP1, PCMT1, PRPF31, PPIH, PRPF3, NHP2L1, CUL3, Prpf8, MEPCE, USP15, SART3, USP4, PRPF18,

Protein Size: 177

Molecular Weight: 19 kDa

Gene ID: 10465

NCBI Accession: [NM_006347](#), [NP_006338](#)

UniProt: [O43447](#)

Application Details

Application Notes: Optimal working dilutions should be determined experimentally by the investigator.

Comment: Antigen size: 177 AA

Restrictions: For Research Use only

Handling

Format: Liquid

Concentration: Lot specific

Buffer: Liquid. Purified antibody supplied in 1x PBS buffer with 0.09 % (w/v) sodium azide and 2 % sucrose.

Preservative: Sodium azide

Precaution of Use: This product contains Sodium azide: a POISONOUS AND HAZARDOUS SUBSTANCE which should be handled by trained staff only.

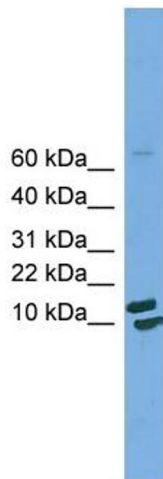
Handling

Handling Advice: Avoid repeated freeze-thaw cycles.

Storage: -20 °C

Storage Comment: For short term use, store at 2-8°C up to 1 week. For long term storage, store at -20°C in small aliquots to prevent freeze-thaw cycles.

Images



Western Blotting

Image 1. WB Suggested Anti-PPIH

Antibody Titration: 0.2-1 µg/mL

Positive Control: HepG2 cell lysate

PPIH is supported by BioGPS gene expression data to be expressed in HepG2



Western Blotting

Image 2. WB Suggested Anti-PPIH Antibody Titration: 0.2-

1 µg/ml

Positive Control: HepG2 cell lysate