



[Go to Product page](#)

Datasheet for ABIN2784812

anti-MRPL28 antibody (Middle Region)

2 Images

Overview

Quantity:	100 µL
Target:	MRPL28
Binding Specificity:	Middle Region
Reactivity:	Human, Mouse, Rat, Cow, Guinea Pig, Horse, Zebrafish (Danio rerio), Dog
Host:	Rabbit
Clonality:	Polyclonal
Application:	Western Blotting (WB)

Product Details

Immunogen:	The immunogen is a synthetic peptide directed towards the middle region of human MRPL28
Sequence:	EDPERRAAIY DKYKEFAIPE EEAEWVGLTL EEAIEKQRLL EEKDPVPLFK
Predicted Reactivity:	Cow: 100%, Dog: 93%, Guinea Pig: 100%, Horse: 100%, Human: 100%, Mouse: 100%, Rat: 100%, Zebrafish: 90%
Characteristics:	This is a rabbit polyclonal antibody against MRPL28. It was validated on Western Blot using a cell lysate as a positive control.
Purification:	Affinity Purified

Target Details

Target:	MRPL28
Alternative Name:	MRPL28 (MRPL28 Products)

Target Details

Background:	<p>Mammalian mitochondrial ribosomal proteins are encoded by nuclear genes and help in protein synthesis within the mitochondrion. Mitochondrial ribosomes (mitoribosomes) consist of a small 28S subunit and a large 39S subunit. They have an estimated 75 % prot</p> <p>Alias Symbols: MAAT1, MGC8499, p15</p> <p>Protein Interaction Partner: IKZF3, TRAF3IP2, TRAF4, TEF, CDR2, FAM9B, HMBOX1, BANP, GRSF1, NPM1, MRPL32, MRPL41, MRPS7, MSLN, MRPL23, ILF2, APP, MRPL9, CUL3, UBC, ICT1, OXA1L, TUBB3, HTR2A,</p> <p>Protein Size: 256</p>
Molecular Weight:	30 kDa
Gene ID:	10573
NCBI Accession:	NM_006428 , NP_006419
UniProt:	Q13084
Pathways:	Mitotic G1-G1/S Phases

Application Details

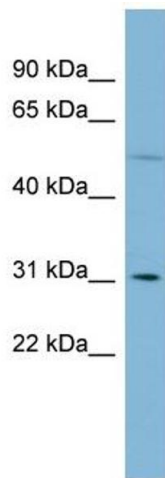
Application Notes:	Optimal working dilutions should be determined experimentally by the investigator.
Comment:	Antigen size: 256 AA
Restrictions:	For Research Use only

Handling

Format:	Liquid
Concentration:	Lot specific
Buffer:	Liquid. Purified antibody supplied in 1x PBS buffer with 0.09 % (w/v) sodium azide and 2 % sucrose.
Preservative:	Sodium azide
Precaution of Use:	This product contains Sodium azide: a POISONOUS AND HAZARDOUS SUBSTANCE which should be handled by trained staff only.
Handling Advice:	Avoid repeated freeze-thaw cycles.
Storage:	-20 °C
Storage Comment:	For short term use, store at 2-8°C up to 1 week. For long term storage, store at -20°C in small

aliquots to prevent freeze-thaw cycles.

Images

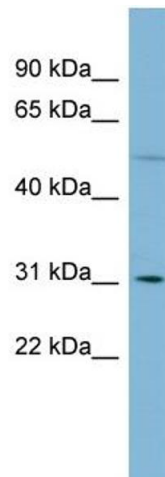


Western Blotting

Image 1. WB Suggested Anti-MRPL28 Antibody Titration:

0.2-1 ug/ml

Positive Control: PANC1 cell lysate



Western Blotting

Image 2. WB Suggested Anti-MRPL28

Antibody Titration: 0.2-1 µg/mL

Positive Control: PANC1 cell lysate

MRPL28 is supported by BioGPS gene expression data to be expressed in PANC1