

Datasheet for ABIN2784814  
**anti-MTHFS antibody (Middle Region)**



[Go to Product page](#)

1 Image

## Overview

Quantity:	100 µL
Target:	MTHFS
Binding Specificity:	Middle Region
Reactivity:	Human, Mouse, Rat, Dog, Guinea Pig, Horse, Cow
Host:	Rabbit
Clonality:	Polyclonal
Conjugate:	This MTHFS antibody is un-conjugated
Application:	Western Blotting (WB)

## Product Details

Immunogen:	The immunogen is a synthetic peptide directed towards the middle region of human MTHFS
Sequence:	TSWNIPQPGE GDVREEALST GGLDLIFMPG LGFDKHGNRL GRGKGYYDAY
Predicted Reactivity:	Cow: 79%, Dog: 86%, Guinea Pig: 86%, Horse: 86%, Human: 100%, Mouse: 100%, Rat: 100%
Characteristics:	This is a rabbit polyclonal antibody against MTHFS. It was validated on Western Blot using a cell lysate as a positive control.
Purification:	Affinity Purified

## Target Details

Target:	MTHFS
Alternative Name:	MTHFS ( <a href="#">MTHFS Products</a> )

## Target Details

Background: The exact function of MTHFS remains unknown.  
Alias Symbols: FLJ30410, HsT19268  
Protein Interaction Partner: UBC, TSC22D4,  
Protein Size: 203

Molecular Weight: 23 kDa

Gene ID: 10588

NCBI Accession: [NM\\_006441](#), [NP\\_006432](#)

UniProt: [P49914](#)

## Application Details

Application Notes: Optimal working dilutions should be determined experimentally by the investigator.

Comment: Antigen size: 203 AA

Restrictions: For Research Use only

## Handling

Format: Liquid

Concentration: Lot specific

Buffer: Liquid. Purified antibody supplied in 1x PBS buffer with 0.09 % (w/v) sodium azide and 2 % sucrose.

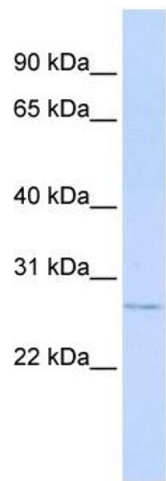
Preservative: Sodium azide

Precaution of Use: This product contains Sodium azide: a POISONOUS AND HAZARDOUS SUBSTANCE which should be handled by trained staff only.

Handling Advice: Avoid repeated freeze-thaw cycles.

Storage: -20 °C

Storage Comment: For short term use, store at 2-8°C up to 1 week. For long term storage, store at -20°C in small aliquots to prevent freeze-thaw cycles.



Western Blotting

**Image 1. WB Suggested Anti-MTHFS Antibody Titration:**

0.2-1 ug/ml

**ELISA Titer:** 1:312500

**Positive Control:** Transfected 293T