

Datasheet for ABIN2784820

anti-GAS2L1 antibody (Middle Region)



[Go to Product page](#)

1 Image

Overview

Quantity:	100 µL
Target:	GAS2L1
Binding Specificity:	Middle Region
Reactivity:	Human, Mouse, Rat, Cow, Guinea Pig
Host:	Rabbit
Clonality:	Polyclonal
Conjugate:	This GAS2L1 antibody is un-conjugated
Application:	Western Blotting (WB)

Product Details

Sequence:	TPVSLRSTKE GPETPPRPRD QLPPHPRSRR YSGDSDSSAS SAQSGPLGTR
Predicted Reactivity:	Cow: 85%, Guinea Pig: 93%, Human: 100%, Mouse: 93%, Rat: 86%
Characteristics:	This is a rabbit polyclonal antibody against GAS2L1. It was validated on Western Blot.
Purification:	Affinity Purified

Target Details

Target:	GAS2L1
Alternative Name:	GAS2L1 (GAS2L1 Products)
Background:	The protein encoded by this gene, a member of the GAS2 family, is similar in sequence to the mouse protein Gas2, an actin-associated protein expressed at high levels in growth-arrested

Target Details

cells. Expression of the mouse Gas2 gene is negatively regulated by serum and growth factors.
Three transcript variants encoding two different isoforms have been found for this gene.
Alias Symbols: GAR22, MGC17243
Protein Interaction Partner: POT1, SH3KBP1, E2F1, E2F4,
Protein Size: 681

Molecular Weight: 73 kDa

Gene ID: 10634

NCBI Accession: [NM_006478](#), [NP_006469](#)

UniProt: [Q99501](#)

Application Details

Application Notes: Optimal working dilutions should be determined experimentally by the investigator.

Comment: Antigen size: 681 AA

Restrictions: For Research Use only

Handling

Format: Liquid

Concentration: Lot specific

Buffer: Liquid. Purified antibody supplied in 1x PBS buffer with 0.09 % (w/v) sodium azide and 2 % sucrose.

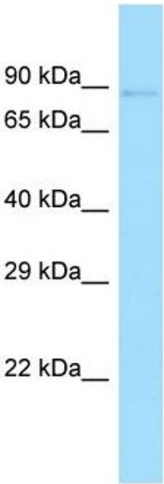
Preservative: Sodium azide

Precaution of Use: This product contains Sodium azide: a POISONOUS AND HAZARDOUS SUBSTANCE which should be handled by trained staff only.

Handling Advice: Avoid repeated freeze-thaw cycles.

Storage: -20 °C

Storage Comment: For short term use, store at 2-8°C up to 1 week. For long term storage, store at -20°C in small aliquots to prevent freeze-thaw cycles.



Western Blotting

Image 1. WB Suggested Anti-GAS2L1 Antibody Titration:
1.0 ug/ml Positive Control: Fetal Spleen