

Datasheet for ABIN2784821

anti-GAS2L1 antibody (Middle Region)[Go to Product page](#)**1** Image

Overview

Quantity:	100 µL
Target:	GAS2L1
Binding Specificity:	Middle Region
Reactivity:	Human, Mouse, Rat, Cow, Dog, Pig
Host:	Rabbit
Clonality:	Polyclonal
Conjugate:	This GAS2L1 antibody is un-conjugated
Application:	Western Blotting (WB), Immunohistochemistry (IHC)

Product Details

Immunogen:	The immunogen is a synthetic peptide directed towards the middle region of human GAS2L1
Sequence:	ARSQSREEQA VLLVRRDRDG QHSWVPRGRG SGGSGRSTPQ TPRARSPAAP
Predicted Reactivity:	Cow: 86%, Dog: 92%, Human: 100%, Mouse: 100%, Pig: 86%, Rat: 93%
Characteristics:	This is a rabbit polyclonal antibody against GAS2L1. It was validated on Western Blot using a cell lysate as a positive control.
Purification:	Affinity Purified

Target Details

Target:	GAS2L1
Alternative Name:	GAS2L1 (GAS2L1 Products)

Target Details

Background:	<p>GAS2L1, a member of the GAS2 family, is similar in sequence to the mouse protein Gas2, an actin-associated protein expressed at high levels in growth-arrested cells. Expression of the mouse Gas2 gene is negatively regulated by serum and growth factors. Three transcript variants encoding two different isoforms have been found for this gene. The protein encoded by this gene, a member of the GAS2 family, is similar in sequence to the mouse protein Gas2, an actin-associated protein expressed at high levels in growth-arrested cells. Expression of the mouse Gas2 gene is negatively regulated by serum and growth factors. Three transcript variants encoding two different isoforms have been found for this gene.</p> <p>Alias Symbols: GAR22, MGC17243</p> <p>Protein Interaction Partner: POT1, SH3KBP1, E2F1, E2F4,</p> <p>Protein Size: 681</p>
Molecular Weight:	73 kDa
Gene ID:	10634
NCBI Accession:	NM_006478 , NP_006469
UniProt:	Q99501

Application Details

Application Notes:	Optimal working dilutions should be determined experimentally by the investigator.
Comment:	Antigen size: 681 AA
Restrictions:	For Research Use only

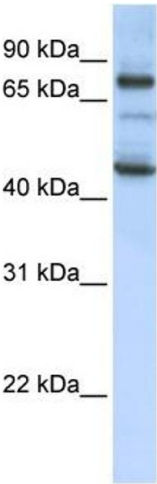
Handling

Format:	Liquid
Concentration:	Lot specific
Buffer:	Liquid. Purified antibody supplied in 1x PBS buffer with 0.09 % (w/v) sodium azide and 2 % sucrose.
Preservative:	Sodium azide
Precaution of Use:	This product contains Sodium azide: a POISONOUS AND HAZARDOUS SUBSTANCE which should be handled by trained staff only.
Handling Advice:	Avoid repeated freeze-thaw cycles.
Storage:	-20 °C

Handling

Storage Comment: For short term use, store at 2-8°C up to 1 week. For long term storage, store at -20°C in small aliquots to prevent freeze-thaw cycles.

Images



Western Blotting

Image 1. WB Suggested Anti-GAS2L1 Antibody Titration:

0.2-1 ug/ml

ELISA Titer: 1:62500

Positive Control: MCF7 cell lysate