

Datasheet for ABIN2784824
anti-GRAP antibody (Middle Region)



[Go to Product page](#)

1 Image

Overview

Quantity:	100 µL
Target:	GRAP
Binding Specificity:	Middle Region
Reactivity:	Human, Mouse, Rat, Cow, Guinea Pig, Dog, Horse, Rabbit, Goat, Zebrafish (Danio rerio)
Host:	Rabbit
Clonality:	Polyclonal
Conjugate:	This GRAP antibody is un-conjugated
Application:	Western Blotting (WB)

Product Details

Sequence:	GDQVQHFKVL REASGKYFLW EEKFNSLNEL VDFYRTTTIA KRRQIFLCDE
Predicted Reactivity:	Cow: 86%, Dog: 100%, Goat: 75%, Guinea Pig: 100%, Horse: 100%, Human: 100%, Mouse: 100%, Rabbit: 100%, Rat: 100%, Zebrafish: 79%
Characteristics:	This is a rabbit polyclonal antibody against Grap. It was validated on Western Blot.
Purification:	Affinity Purified

Target Details

Target:	GRAP
Alternative Name:	Grap (GRAP Products)
Background:	The function of this protein remains unknown.

Target Details

Alias Symbols: MGC112733

Protein Size: 217

Molecular Weight: 23 kDa

Gene ID: 363616

NCBI Accession: [NM_001025749](#), [NP_001020920](#)

UniProt: [Q4KM68](#)

Application Details

Application Notes: Optimal working dilutions should be determined experimentally by the investigator.

Comment: Antigen size: 217 AA

Restrictions: For Research Use only

Handling

Format: Liquid

Concentration: Lot specific

Buffer: Liquid. Purified antibody supplied in 1x PBS buffer with 0.09 % (w/v) sodium azide and 2 % sucrose.

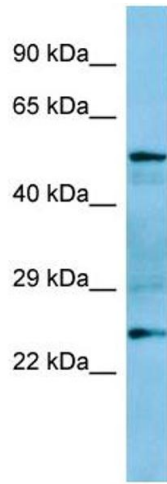
Preservative: Sodium azide

Precaution of Use: This product contains Sodium azide: a POISONOUS AND HAZARDOUS SUBSTANCE which should be handled by trained staff only.

Handling Advice: Avoid repeated freeze-thaw cycles.

Storage: -20 °C

Storage Comment: For short term use, store at 2-8°C up to 1 week. For long term storage, store at -20°C in small aliquots to prevent freeze-thaw cycles.



Western Blotting

Image 1. Host: Rabbit Target Name: Grap Antibody
Dilution: 1.0ug/ml Sample Type: Rat Spleen