

Datasheet for ABIN2784830
anti-HSPH1 antibody (Middle Region)[Go to Product page](#)

2 Images

1 Publication

Overview

Quantity:	100 µL
Target:	HSPH1
Binding Specificity:	Middle Region
Reactivity:	Human, Mouse, Rat, Cow, Dog, Guinea Pig, Horse, Rabbit
Host:	Rabbit
Clonality:	Polyclonal
Conjugate:	This HSPH1 antibody is un-conjugated
Application:	Western Blotting (WB), Immunohistochemistry (IHC)

Product Details

Immunogen:	The immunogen is a synthetic peptide directed towards the middle region of human HSPH1
Sequence:	EENEMSSEAD MECLNQRPE NPDTDKNVQQ DNSEAGTQPQ VQTDAQQTSQ
Predicted Reactivity:	Cow: 93%, Dog: 100%, Guinea Pig: 100%, Horse: 100%, Human: 100%, Mouse: 100%, Rabbit: 100%, Rat: 100%
Characteristics:	This is a rabbit polyclonal antibody against HSPH1. It was validated on Western Blot using a cell lysate as a positive control.
Purification:	Affinity Purified

Target Details

Target:	HSPH1
---------	-------

Target Details

Alternative Name:	HSPH1 (HSPH1 Products)
Background:	<p>HSPH1 prevents the aggregation of denatured proteins in cells under severe stress, on which the ATP levels decrease markedly. It inhibits HSPA8/HSC70 ATPase and chaperone activities.</p> <p>Alias Symbols: DKFZp686M05240, HSP105, HSP105A, HSP105B, KIAA0201, NY-CO-25</p> <p>Protein Interaction Partner: HUWE1, UBC, SUMO2, SUMO3, HSPA8, MDM2, ILK, SET, PPM1G, PLOD2, HSPA4, DPYSL2, CTNNA1, PARVA, PUS7, SAMHD1, XPO7, FAF1, CARM1, SEC23A, PRMT3, FARSB, RANBP3, HIRIP3, HIST1H4A, USP11, SF1, UGP2, HECW2, FBXO6, TARDBP, CFTR, METTL21A, env, NOS2, HSP90AB1, HSP9</p> <p>Protein Size: 858</p>
Molecular Weight:	97 kDa
Gene ID:	10808
NCBI Accession:	NM_006644 , NP_006635
UniProt:	Q92598

Application Details

Application Notes:	Optimal working dilutions should be determined experimentally by the investigator.
Comment:	Antigen size: 858 AA
Restrictions:	For Research Use only

Handling

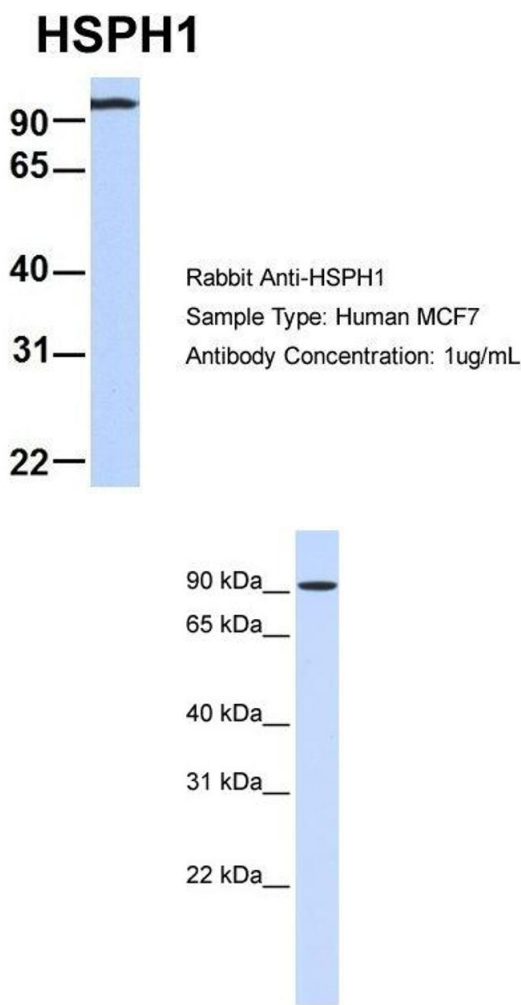
Format:	Liquid
Concentration:	Lot specific
Buffer:	Liquid. Purified antibody supplied in 1x PBS buffer with 0.09 % (w/v) sodium azide and 2 % sucrose.
Preservative:	Sodium azide
Precaution of Use:	This product contains Sodium azide: a POISONOUS AND HAZARDOUS SUBSTANCE which should be handled by trained staff only.
Handling Advice:	Avoid repeated freeze-thaw cycles.
Storage:	-20 °C
Storage Comment:	For short term use, store at 2-8°C up to 1 week. For long term storage, store at -20°C in small

aliquots to prevent freeze-thaw cycles.

Publications

Product cited in: Collins, Wright, Edwards, Davis, Grinham, Cole, Goward, Aguado, Mallya, Mokrab, Huckle, Beare, Dunham: "A genome annotation-driven approach to cloning the human ORFeome." in: **Genome biology**, Vol. 5, Issue 10, pp. R84, (2004) ([PubMed](#)).

Validation report #103398 for Immunocytochemistry (ICC)



Western Blotting

Image 1. Host: Rabbit
Target Name: HSPH1
Sample Tissue: Human MCF7
Antibody Dilution: 1.0 µg/mL HSPH1 is strongly supported by BioGPS gene expression data to be expressed in MCF7

Western Blotting

Image 2. WB Suggested Anti-HSPH1 Antibody Titration:
0.2-1 ug/ml
ELISA Titer: 1:62500
Positive Control: 293T cell lysate