

Datasheet for ABIN2784836
anti-G Substrate antibody (Middle Region)[Go to Product page](#)

2 Images

Overview

Quantity:	100 µL
Target:	G Substrate (Gsbs)
Binding Specificity:	Middle Region
Reactivity:	Human, Mouse, Pig, Rat, Cow, Dog, Guinea Pig, Horse, Rabbit
Host:	Rabbit
Clonality:	Polyclonal
Conjugate:	This G Substrate antibody is un-conjugated
Application:	Western Blotting (WB)

Product Details

Immunogen:	The immunogen is a synthetic peptide directed towards the middle region of human C7orf16
Sequence:	IKDCDLKKKP RKGKNVQATL NVESDQKKPR RKDTPALHIP PFIPGVFSEH
Predicted Reactivity:	Cow: 92%, Dog: 92%, Guinea Pig: 92%, Horse: 92%, Human: 100%, Mouse: 100%, Pig: 100%, Rabbit: 85%, Rat: 100%
Characteristics:	This is a rabbit polyclonal antibody against C7orf16. It was validated on Western Blot.
Purification:	Affinity Purified

Target Details

Target:	G Substrate (Gsbs)
Alternative Name:	C7orf16 (Gsbs Products)

Target Details

Background: The function of C7orf16 remains unknown.
Alias Symbols: GSBS, C7orf16
Protein Interaction Partner: APP, PRKG1, PRKACA,
Protein Size: 155

Molecular Weight: 18 kDa

Gene ID: 10842

NCBI Accession: [NM_006658](#), [NP_006649](#)

UniProt: [O96001](#)

Application Details

Application Notes: Optimal working dilutions should be determined experimentally by the investigator.

Comment: Antigen size: 155 AA

Restrictions: For Research Use only

Handling

Format: Liquid

Concentration: Lot specific

Buffer: Liquid. Purified antibody supplied in 1x PBS buffer with 0.09 % (w/v) sodium azide and 2 % sucrose.

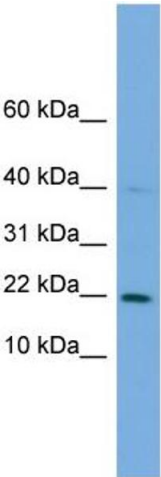
Preservative: Sodium azide

Precaution of Use: This product contains Sodium azide: a POISONOUS AND HAZARDOUS SUBSTANCE which should be handled by trained staff only.

Handling Advice: Avoid repeated freeze-thaw cycles.

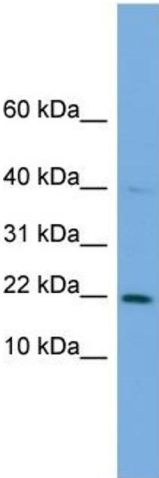
Storage: -20 °C

Storage Comment: For short term use, store at 2-8°C up to 1 week. For long term storage, store at -20°C in small aliquots to prevent freeze-thaw cycles.



Western Blotting

Image 1. WB Suggested Anti-C7orf16 Antibody Titration:
0.2-1 ug/ml
ELISA Titer: 1:1562500
Positive Control: THP-1 cell lysate



Rabbit Anti-C7orf16 Antibody
Catalog Number: ARP52229
Lot Number: QC28827
Lane: THP-1 Cell Lysate

Antibody Titration: 1.0µg/ml
Gel Concentration: 10-20%

Western Blotting

Image 2. WB Suggested Anti-C7orf16
Antibody Titration: 0.2-1 µg/mL ELISA Titer: 1:1562500
Positive Control: THP-1 cell lysate