

Datasheet for ABIN2784844
anti-RALBP1 antibody (N-Term)



[Go to Product page](#)

2 Images

Overview

Quantity:	100 µL
Target:	RALBP1
Binding Specificity:	N-Term
Reactivity:	Human, Mouse, Rat, Dog, Cow, Goat, Horse, Pig, Rabbit, Guinea Pig
Host:	Rabbit
Clonality:	Polyclonal
Conjugate:	This RALBP1 antibody is un-conjugated
Application:	Western Blotting (WB), Immunohistochemistry (IHC)

Product Details

Immunogen:	The immunogen is a synthetic peptide directed towards the N terminal region of human RALBP1
Sequence:	MTECFLPPTS SPSEHRRVEH GSGLTRTPSS EEISPTKFPG LYRTGEPSP
Predicted Reactivity:	Cow: 100%, Dog: 100%, Goat: 86%, Guinea Pig: 93%, Horse: 100%, Human: 100%, Mouse: 100%, Pig: 100%, Rabbit: 100%, Rat: 100%
Characteristics:	This is a rabbit polyclonal antibody against RALBP1. It was validated on Western Blot.
Purification:	Affinity Purified

Target Details

Target:	RALBP1
---------	--------

Target Details

Alternative Name:	RALBP1 (RALBP1 Products)
Background:	<p>RALBP1 can activate specifically hydrolysis of GTP bound to RAC1 and CDC42, but not RALA. RALBP1 mediates ATP-dependent transport of S-(2,4-dinitrophenyl)-glutathione (DNP-SG) and doxorubicin (DOX) and is the major ATP-dependent transporter of glutathione conjugates of electrophiles (GS-E) and DOX in erythrocytes. RALBP1 can catalyze transport of glutathione conjugates and xenobiotics, and may contribute to the multidrug resistance phenomenon. RALBP1 serves as a scaffold protein that brings together proteins forming an endocytotic complex during interphase and also with CDK1 to switch off endocytosis. One of its substrates would be EPN1/Epsin.</p> <p>Alias Symbols: RIP, RIP1, RLIP76, RLIP1</p> <p>Protein Interaction Partner: TNIP1, CEP57, SMARCE1, PPL, GPS2, GSE1, ZNF707, ZBTB38, C1orf216, TBRG1, AMOTL2, TFPT, UBC, RALB, GPSM1, PRKCA, CPSF2, POLR2A, AP2A1, SYNJ2BP, HOOK2, REPS1, FADD, RAC1, TRAF2, CASP8, AP2M1, REPS2, IKBKG, RALA, CCNB1, HSP90AA1, HSF1, EPN1, NUMB, GTF3A, TNF</p> <p>Protein Size: 655</p>
Molecular Weight:	76 kDa
Gene ID:	10928
NCBI Accession:	NM_006788 , NP_006779
UniProt:	Q15311

Application Details

Application Notes:	Optimal working dilutions should be determined experimentally by the investigator.
Comment:	Antigen size: 655 AA
Restrictions:	For Research Use only

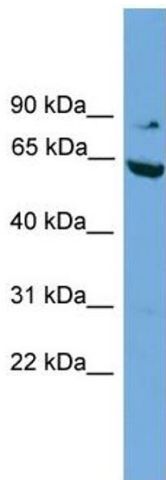
Handling

Format:	Liquid
Concentration:	Lot specific
Buffer:	Liquid. Purified antibody supplied in 1x PBS buffer with 0.09 % (w/v) sodium azide and 2 % sucrose.
Preservative:	Sodium azide

Handling

Precaution of Use:	This product contains Sodium azide: a POISONOUS AND HAZARDOUS SUBSTANCE which should be handled by trained staff only.
Handling Advice:	Avoid repeated freeze-thaw cycles.
Storage:	-20 °C
Storage Comment:	For short term use, store at 2-8°C up to 1 week. For long term storage, store at -20°C in small aliquots to prevent freeze-thaw cycles.

Images

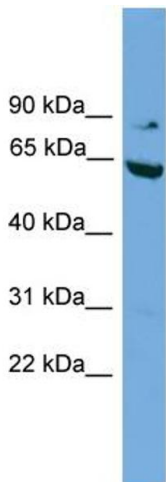


Western Blotting

Image 1. WB Suggested Anti-RALBP1 Antibody Titration:

0.2-1 ug/ml

Positive Control: HepG2 cell lysate



Rabbit Anti-RALBP1 Antibody
Catalog Number: ARP52251
Lot Number: QC29276
Lane: HepG2 Cell Lysate

Antibody Titration: 1.0µg/ml
Gel Concentration: 12%

Western Blotting

Image 2. WB Suggested Anti-RALBP1

Antibody Titration: 0.2-1 µg/mL

Positive Control: HepG2 cell lysate