

Datasheet for ABIN2784845
anti-EHD1 antibody (Middle Region)[Go to Product page](#)

2 Images

Overview

Quantity:	100 µL
Target:	EHD1
Binding Specificity:	Middle Region
Reactivity:	Human, Rat, Mouse, Cow, Rabbit, Dog, Guinea Pig, Horse, Zebrafish (Danio rerio)
Host:	Rabbit
Clonality:	Polyclonal
Conjugate:	This EHD1 antibody is un-conjugated
Application:	Western Blotting (WB), Immunohistochemistry (IHC)

Product Details

Immunogen:	The immunogen is a synthetic peptide directed towards the middle region of human EHD1
Sequence:	AKKEMVKSKL PNTVLGKIWK LADVVDKDLL DDEEFALANH LIKVKLEGHE
Predicted Reactivity:	Cow: 93%, Dog: 86%, Guinea Pig: 100%, Horse: 100%, Human: 100%, Mouse: 100%, Rabbit: 100%, Rat: 100%, Zebrafish: 93%
Characteristics:	This is a rabbit polyclonal antibody against EHD1. It was validated on Western Blot.
Purification:	Affinity Purified

Target Details

Target:	EHD1
Alternative Name:	EHD1 (EHD1 Products)

Target Details

Background:	<p>This gene belongs to a highly conserved gene family encoding EPS15 homology (EH) domain-containing proteins. The protein-binding EH domain was first noted in EPS15, a substrate for the epidermal growth factor receptor. The EH domain has been shown to be an important motif in proteins involved in protein-protein interactions and in intracellular sorting. The protein encoded by this gene is thought to play a role in the endocytosis of IGF1 receptors.</p> <p>Alias Symbols: FLJ42622, FLJ44618, H-PAST, HPAST1, PAST, PAST1</p> <p>Protein Interaction Partner: PLA2G4A, MICALL1, UBC, PDE12, AASDHPPT, CTPS2, UBA6, EHD4, STK39, FKBP9, PDCD10, ATE1, ARIH2, GTF3C4, NOL3, LIMD1, API5, XPNPEP1, WARS, STAT6, PRKDC, PGGT1B, NUBP1, KTN1, DRG2, RBSN, RAB11FIP2, RAB8A, DGKQ, ZFYVE20, MICAL1, ANKFY1, VPS26A, EPN3, EPN1, EHD</p> <p>Protein Size: 534</p>
Molecular Weight:	60 kDa
Gene ID:	10938
NCBI Accession:	NM_006795 , NP_006786
UniProt:	Q9H4M9
Pathways:	Regulation of Muscle Cell Differentiation , Skeletal Muscle Fiber Development

Application Details

Application Notes:	Optimal working dilutions should be determined experimentally by the investigator.
Comment:	Antigen size: 534 AA
Restrictions:	For Research Use only

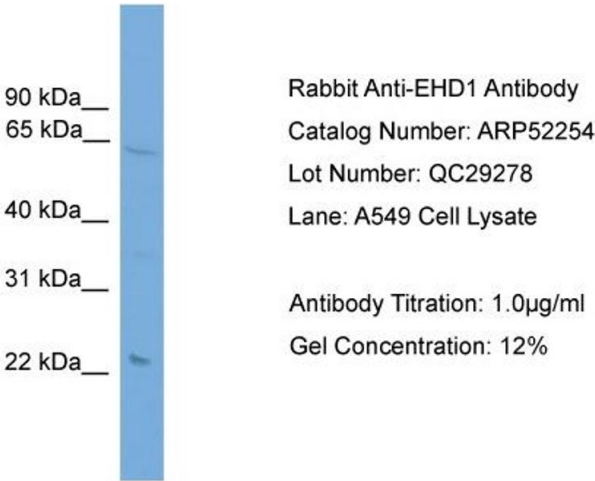
Handling

Format:	Liquid
Concentration:	Lot specific
Buffer:	Liquid. Purified antibody supplied in 1x PBS buffer with 0.09 % (w/v) sodium azide and 2 % sucrose.
Preservative:	Sodium azide
Precaution of Use:	This product contains Sodium azide: a POISONOUS AND HAZARDOUS SUBSTANCE which should be handled by trained staff only.
Handling Advice:	Avoid repeated freeze-thaw cycles.

Handling

Storage:	-20 °C
Storage Comment:	For short term use, store at 2-8°C up to 1 week. For long term storage, store at -20°C in small aliquots to prevent freeze-thaw cycles.

Images



Western Blotting

Image 1. WB Suggested Anti-EHD1

Antibody Titration: 0.2-1 µg/mL

Positive Control: A549 cell lysate



Western Blotting

Image 2. WB Suggested Anti-EHD1 Antibody Titration: 0.2-1 ug/ml

Positive Control: A549 cell lysate