



[Go to Product page](#)

Datasheet for ABIN2784848

anti-PNRC1 antibody (Middle Region)

2 Images

Overview

Quantity:	100 µL
Target:	PNRC1
Binding Specificity:	Middle Region
Reactivity:	Human, Guinea Pig, Horse, Mouse, Rat, Cow, Dog, Rabbit
Host:	Rabbit
Clonality:	Polyclonal
Conjugate:	This PNRC1 antibody is un-conjugated
Application:	Western Blotting (WB)

Product Details

Immunogen:	The immunogen is a synthetic peptide directed towards the middle region of human PNRC1
Sequence:	KEVLKSKMGK SEKIALPHGQ LVHGIHLYEQ PKINRQKSKY NLPLTKITSA
Predicted Reactivity:	Cow: 93%, Dog: 100%, Guinea Pig: 100%, Horse: 100%, Human: 100%, Mouse: 100%, Rabbit: 93%, Rat: 100%
Characteristics:	This is a rabbit polyclonal antibody against PNRC1. It was validated on Western Blot.
Purification:	Affinity Purified

Target Details

Target:	PNRC1
Alternative Name:	PNRC1 (PNRC1 Products)

Target Details

Background: PNCRC1 is a nuclear receptor coactivator. PNCRC1 may play a role in signal transduction.
Alias Symbols: B4-2, PNAS-145, PROL2, PRR2, RP11-63L7.5
Protein Interaction Partner: DCP1B, DCP1A, ELAVL1, MAPK8, RORB, RORA, RARG, RARB, HNF4G, HNF4A, NR5A2, ESRRG, ESR2, AR, GRB2,
Protein Size: 327

Molecular Weight: 35 kDa

Gene ID: 10957

NCBI Accession: [NM_006813](#), [NP_006804](#)

UniProt: [Q12796](#)

Application Details

Application Notes: Optimal working dilutions should be determined experimentally by the investigator.

Comment: Antigen size: 327 AA

Restrictions: For Research Use only

Handling

Format: Liquid

Concentration: Lot specific

Buffer: Liquid. Purified antibody supplied in 1x PBS buffer with 0.09 % (w/v) sodium azide and 2 % sucrose.

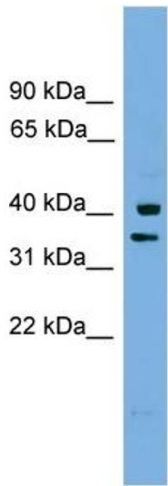
Preservative: Sodium azide

Precaution of Use: This product contains Sodium azide: a POISONOUS AND HAZARDOUS SUBSTANCE which should be handled by trained staff only.

Handling Advice: Avoid repeated freeze-thaw cycles.

Storage: -20 °C

Storage Comment: For short term use, store at 2-8°C up to 1 week. For long term storage, store at -20°C in small aliquots to prevent freeze-thaw cycles.



Rabbit Anti-PNRC1 Antibody
Catalog Number: ARP52260
Lot Number: QC29281
Lane: Fetal Brain Lysate

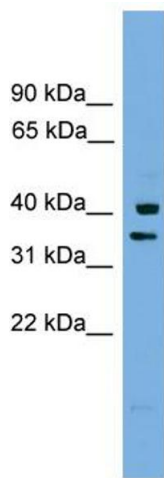
Antibody Titration: 1.0µg/ml
Gel Concentration: 12%

Western Blotting

Image 1. WB Suggested Anti-PNRC1

Antibody Titration: 0.2-1 µg/mL

Positive Control: Human brain



Western Blotting

Image 2. WB Suggested Anti-PNRC1 Antibody Titration:

0.2-1 ug/ml

Positive Control: Human brain