

Datasheet for ABIN2784849
anti-RAB40B antibody (Middle Region)[Go to Product page](#)

1 Image

Overview

Quantity:	100 µL
Target:	RAB40B
Binding Specificity:	Middle Region
Reactivity:	Human, Mouse, Rat, Guinea Pig, Rabbit, Zebrafish (Danio rerio), Cow, Dog, Horse, Saccharomyces cerevisiae
Host:	Rabbit
Clonality:	Polyclonal
Application:	Western Blotting (WB)

Product Details

Immunogen:	The immunogen is a synthetic peptide directed towards the middle region of human RAB40B
Sequence:	YAERLGVTFF EVSPLCNFNI TESFTELARI VLLRHGMDRL WRPSKVLSLQ
Predicted Reactivity:	Cow: 92%, Dog: 100%, Guinea Pig: 100%, Horse: 92%, Human: 100%, Mouse: 100%, Rabbit: 100%, Rat: 100%, Yeast: 82%, Zebrafish: 100%
Characteristics:	This is a rabbit polyclonal antibody against RAB40B. It was validated on Western Blot using a cell lysate as a positive control.
Purification:	Affinity Purified

Target Details

Target:	RAB40B
Alternative Name:	RAB40B (RAB40B Products)

Target Details

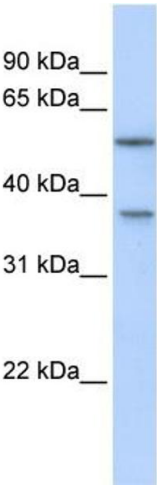
Background:	<p>RAB40B has similarity to a yeast protein which suggests a role of the gene product in regulating secretory vesicles. The protein encoded by this gene has similarity to a yeast protein which suggests a role of the gene product in regulating secretory vesicles.</p> <p>Alias Symbols: FLJ42385, RAR, SEC4L</p> <p>Protein Interaction Partner: Ccdc64b, WFDC1, UBC, FHIT, APP, CUL5, TCEB2, TCEB1,</p> <p>Protein Size: 278</p>
Molecular Weight:	31 kDa
Gene ID:	10966
NCBI Accession:	NM_006822 , NP_006813
UniProt:	Q12829

Application Details

Application Notes:	Optimal working dilutions should be determined experimentally by the investigator.
Comment:	Antigen size: 278 AA
Restrictions:	For Research Use only

Handling

Format:	Liquid
Concentration:	Lot specific
Buffer:	Liquid. Purified antibody supplied in 1x PBS buffer with 0.09 % (w/v) sodium azide and 2 % sucrose.
Preservative:	Sodium azide
Precaution of Use:	This product contains Sodium azide: a POISONOUS AND HAZARDOUS SUBSTANCE which should be handled by trained staff only.
Handling Advice:	Avoid repeated freeze-thaw cycles.
Storage:	-20 °C
Storage Comment:	For short term use, store at 2-8°C up to 1 week. For long term storage, store at -20°C in small aliquots to prevent freeze-thaw cycles.



Western Blotting

Image 1. WB Suggested Anti-RAB40B Antibody Titration:

0.2-1 ug/ml

ELISA Titer: 1:12500

Positive Control: 293T cell lysate