

Datasheet for ABIN2784850
anti-METAP2 antibody (N-Term)[Go to Product page](#)

2 Images

Overview

Quantity:	100 µL
Target:	METAP2
Binding Specificity:	N-Term
Reactivity:	Human, Mouse, Rat, Cow, Zebrafish (Danio rerio), Dog, Guinea Pig, Horse, Rabbit
Host:	Rabbit
Clonality:	Polyclonal
Conjugate:	This METAP2 antibody is un-conjugated
Application:	Western Blotting (WB), Immunohistochemistry (IHC)

Product Details

Immunogen:	The immunogen is a synthetic peptide directed towards the N terminal region of human METAP2
Sequence:	ATGKKKKKKK KKRGPQVTD PPSVPICDLY PNGVFPKGQE CEYPPTQDGR
Predicted Reactivity:	Cow: 100%, Dog: 100%, Guinea Pig: 100%, Horse: 100%, Human: 100%, Mouse: 100%, Rabbit: 92%, Rat: 100%, Zebrafish: 85%
Characteristics:	This is a rabbit polyclonal antibody against METAP2. It was validated on Western Blot using a cell lysate as a positive control.
Purification:	Affinity Purified

Target Details

Target:	METAP2
---------	--------

Target Details

Alternative Name:	METAP2 (METAP2 Products)
Background:	<p>METAP2 is a member of the methionyl aminopeptidase family and encodes a protein that binds 2 cobalt or manganese ions. This protein functions both by protecting the alpha subunit of eukaryotic initiation factor 2 from inhibitory phosphorylation and by removing the amino-terminal methionine residue from nascent protein. Increased expression of this gene is associated with various forms of cancer and the anti-cancer drugs fumagillin and ovalicin inhibit the protein by irreversibly binding to its active site. This gene is a member of the methionyl aminopeptidase family and encodes a protein that binds 2 cobalt or manganese ions. This protein functions both by protecting the alpha subunit of eukaryotic initiation factor 2 from inhibitory phosphorylation and by removing the amino-terminal methionine residue from nascent protein. Increased expression of this gene is associated with various forms of cancer and the anti-cancer drugs fumagillin and ovalicin inhibit the protein by irreversibly binding to its active site. A pseudogene of this gene is located on chromosome 2. Publication Note: This RefSeq record includes a subset of the publications that are available for this gene. Please see the Entrez Gene record to access additional publications.</p> <p>Alias Symbols: MAP2, MNPEP, p67, p67eIF2</p> <p>Protein Interaction Partner: UBC, DAK, NPEPPS, GBP1, GAPDH, HMGA1, MTOR, EEF2K, APP, CALM1, S100A4, RAC1, MAPK3, EIF2S3, MAPK1, EIF2AK2, CDC42, E2F4,</p> <p>Protein Size: 478</p>
Molecular Weight:	53 kDa
Gene ID:	10988
NCBI Accession:	NM_006838 , NP_006829
UniProt:	P50579
Pathways:	Regulation of G-Protein Coupled Receptor Protein Signaling

Application Details

Application Notes:	Optimal working dilutions should be determined experimentally by the investigator.
Comment:	Antigen size: 478 AA
Restrictions:	For Research Use only

Handling

Format:	Liquid
---------	--------

Handling

Concentration:	Lot specific
Buffer:	Liquid. Purified antibody supplied in 1x PBS buffer with 0.09 % (w/v) sodium azide and 2 % sucrose.
Preservative:	Sodium azide
Precaution of Use:	This product contains Sodium azide: a POISONOUS AND HAZARDOUS SUBSTANCE which should be handled by trained staff only.
Handling Advice:	Avoid repeated freeze-thaw cycles.
Storage:	-20 °C
Storage Comment:	For short term use, store at 2-8°C up to 1 week. For long term storage, store at -20°C in small aliquots to prevent freeze-thaw cycles.

Images

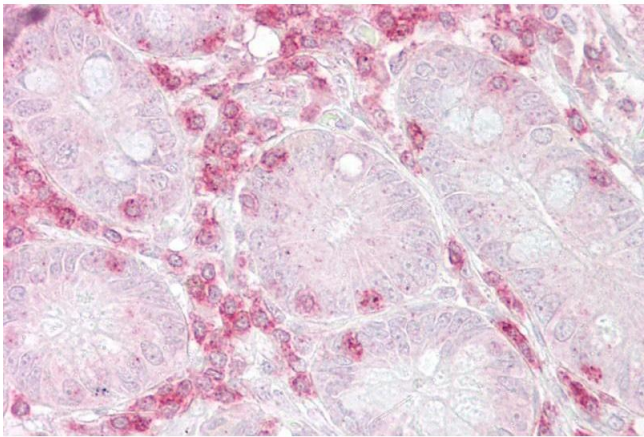


Western Blotting

Image 1. WB Suggested Anti-METAP2 Antibody Titration:

0.2-1 ug/ml

Positive Control: Human brain



Immunohistochemistry

Image 2. Immunohistochemistry with Small intestine tissue at an antibody concentration of 5µg/ml using anti-METAP2 antibody (ARP52266_P050)