

Datasheet for ABIN2784853
anti-ADAP1 antibody (C-Term)[Go to Product page](#)

2 Images

Overview

Quantity:	100 µL
Target:	ADAP1
Binding Specificity:	C-Term
Reactivity:	Human, Mouse, Rat, Pig, Dog, Cow, Guinea Pig
Host:	Rabbit
Clonality:	Polyclonal
Conjugate:	This ADAP1 antibody is un-conjugated
Application:	Western Blotting (WB)

Product Details

Immunogen:	The immunogen is a synthetic peptide corresponding to a region of Mouse
Sequence:	ARFHYLQVAF PGASDADLVP KLSRNYLKEG YMEKTGPKQT EGFRKRWFTM
Predicted Reactivity:	Cow: 93%, Dog: 100%, Guinea Pig: 93%, Human: 100%, Mouse: 100%, Pig: 100%, Rat: 100%
Characteristics:	This is a rabbit polyclonal antibody against Centa1. It was validated on Western Blot.
Purification:	Affinity Purified

Target Details

Target:	ADAP1
Alternative Name:	Centa1 (ADAP1 Products)
Background:	The function of this protein remains unknown.

Target Details

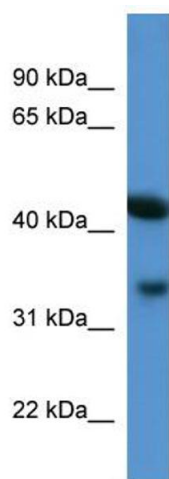
	Alias Symbols: 4930431P11Rik, Centa1, GC1L, p42IP4 Protein Size: 302
Molecular Weight:	33 kDa
Gene ID:	231821
NCBI Accession:	NM_172723 , NP_766311
UniProt:	Q8BVR8

Application Details

Application Notes:	Optimal working dilutions should be determined experimentally by the investigator.
Comment:	Antigen size: 302 AA
Restrictions:	For Research Use only

Handling

Format:	Liquid
Concentration:	Lot specific
Buffer:	Liquid. Purified antibody supplied in 1x PBS buffer with 0.09 % (w/v) sodium azide and 2 % sucrose.
Preservative:	Sodium azide
Precaution of Use:	This product contains Sodium azide: a POISONOUS AND HAZARDOUS SUBSTANCE which should be handled by trained staff only.
Handling Advice:	Avoid repeated freeze-thaw cycles.
Storage:	-20 °C
Storage Comment:	For short term use, store at 2-8°C up to 1 week. For long term storage, store at -20°C in small aliquots to prevent freeze-thaw cycles.



Western Blotting

Image 1. WB Suggested Anti-Centa1 Antibody Titration:

0.2-1 ug/ml

ELISA Titer: 1:1562500

Positive Control: Mouse Kidney



Rabbit Anti-Centa1 Antibody
Catalog Number: ARP52270
Lot Number: QC29287
Lane: Mouse Kidney Lysate

Antibody Titration: 1.0 µg/ml
Gel Concentration: 12%

Western Blotting

Image 2. WB Suggested Anti-Centa1

Antibody Titration: 0.2-1 µg/mL ELISA Titer: 1:1562500

Positive Control: Mouse Kidney